

TRINIDAD FLOOD WATERS, CERCADO PROVINCE, BENI DEPARTMENT, BOLIVIA (8 FEBRUARY 2008)

This map illustrates satellite-detected flood waters over the affected urban extent of Trinidad, the department capital of Beni, Bolivia. Flood water analysis was conducted by change detection with RADARSAT-1 satellite data recorded on 8 February 2008 and 5 April 2001. This is a preliminary analysis & has not yet been validated in the field.

Flood Analysis with
RADARSAT-1 Data
Recorded 8 February
2008 and 5 April 2001



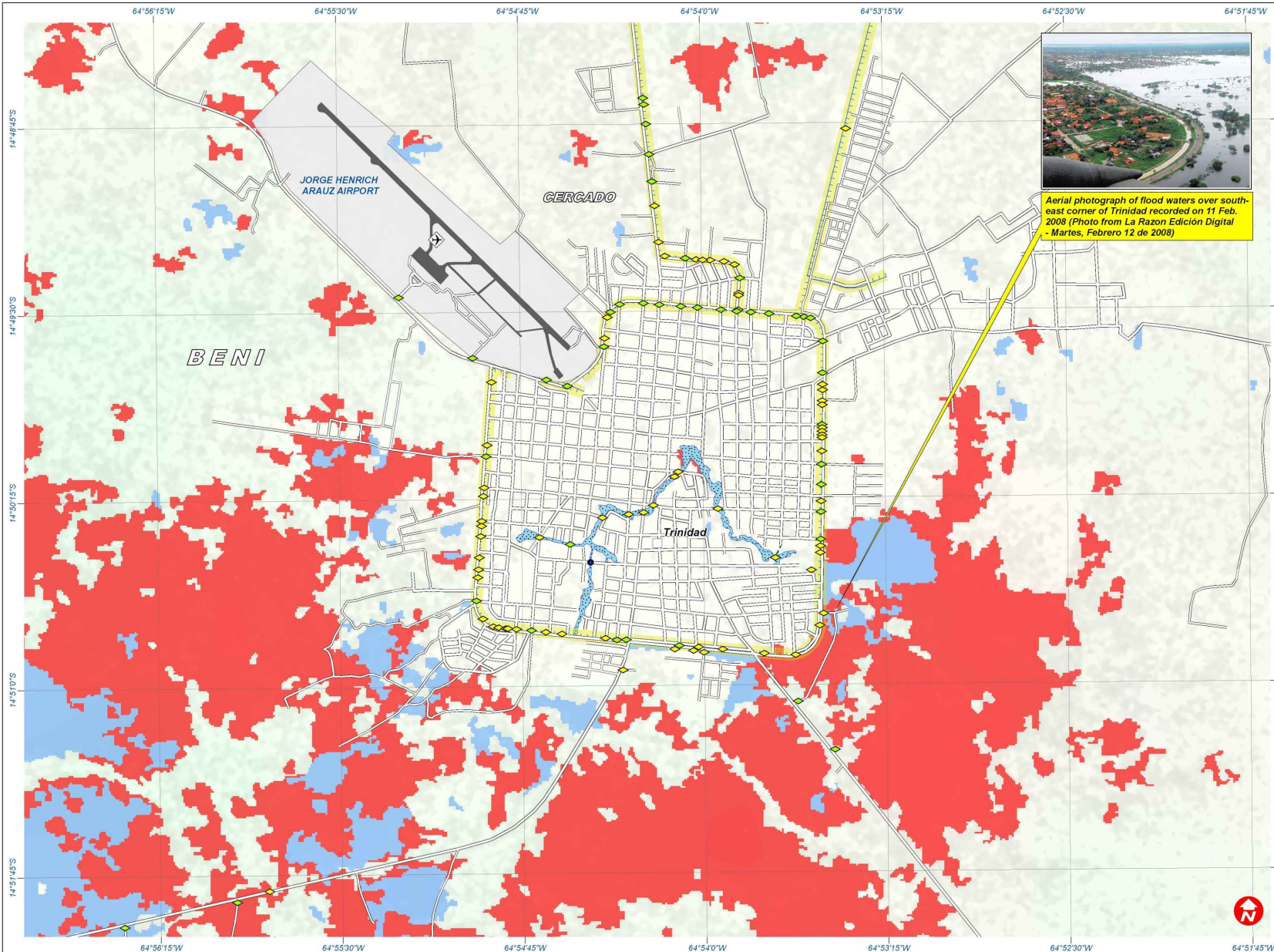
Flooding & Heavy Rainfall



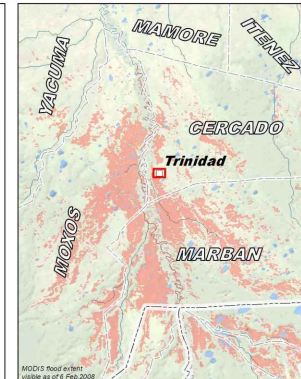
12 February 2008

Version 1.0

Glide No: FL-2007-000231-BOL



Aerial photograph of flood waters over south-east corner of Trinidad recorded on 11 Feb. 2008 (Photo from La Razon Edición Digital - Martes, Febrero 12 de 2008)

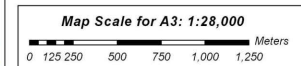


Legend

	Capital		Culvert
	Department Capital		Ferry Crossing
	Village / Town		Bridge (General)
	Airfield		River Forcing
	Tower		Spot Height (m)
	Power Plant		Mine
	Drainage Canal		Oil / Gas Well
	Department Boundary		National Park / Natural Monument
	Province Boundary		Main Road
	National Park Boundary		Secondary Road / Track
	Arroyo (Creek)		Railroad
	San Juan		Arroyo (Creek)

FLOOD WATER ANALYSIS
Derived from RADARSAT Recorded on 8 February 2008

Standing Flood Waters
 Preflood Water (5 April 2001)



Satellite Data RADARSAT
Resolution 25m (SAR WIDE 1)
Dates 8 February 2008 & 25 Sept. 2007
Copyright Canadian Space Agency (2008)
Charter PM INA Argentina
Flood Analysis UNOSAT
Trinidad Data Vectorized from Google Earth
GIS Data USGS, NGA, UNJLC, SALB
Elevation Data SRTM (90m) - NASA
Map Production UNOSAT (12 February 2008)
Projection UTM Zone 20 South
Datum WGS 1984

The depiction and use of boundaries, geographic names and related data shown here are not warranted to be error-free nor do they imply official endorsement or acceptance by the United Nations. This map was produced by the United Nations Institute for Training and Research (UNITAR) Operational Satellite Applications Program (UNOSAT). UNOSAT provides satellite imagery & related geographic information to UN humanitarian & development agencies & their implementing partners.

UNOSAT
satellite solutions for all
Contact Information: info@unosat.org
24/7 Hotline: +41 76 487 4998
www.unosat.org