

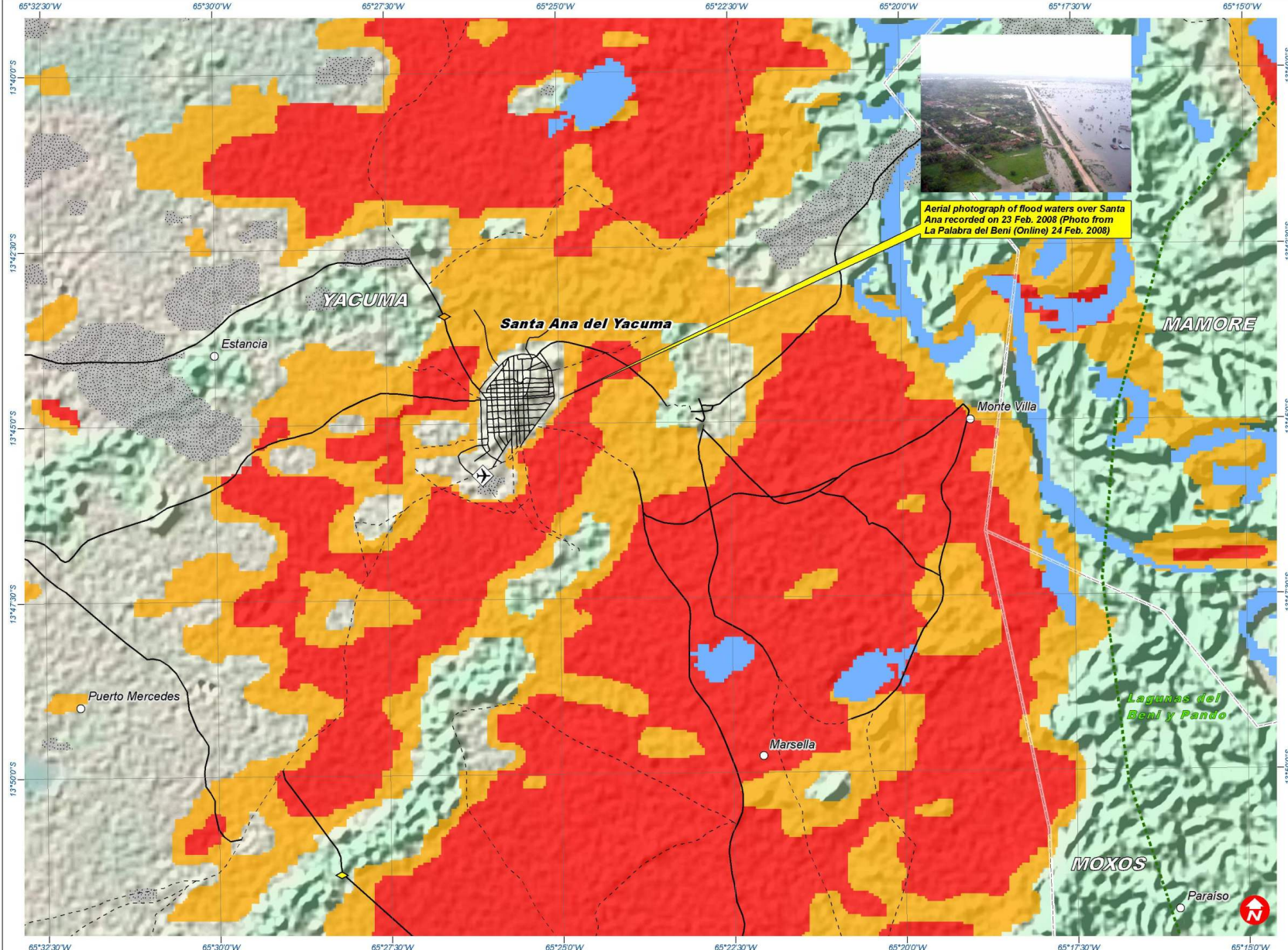
SANTA ANA FLOOD WATERS, YACUMA PROVINCE, BENI DEPARTMENT, BOLIVIA (24 FEBRUARY 2008)

This map illustrates satellite-detected flood waters over the affected urban extent of Santa Ana, the province capital of Yacuma district, Beni department, Bolivia. Flood water analysis was conducted by based on MODIS data acquired on 24 Feb. 2008. Pre-flood waters were derived from ENVISAT/ASAR data (WSM) recorded on 12 Dec. 2005. This is a preliminary analysis & has not yet been validated in the field.

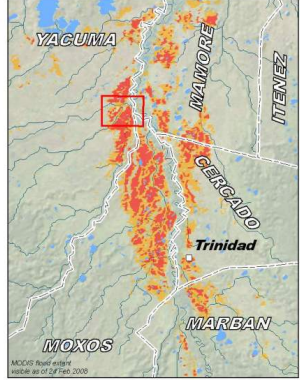
Flood Analysis with
MODIS Data Recorded
24 February 2008



Flooding & Heavy Rainfall
25 February 2008
Version 1.0
Glide No: FL-2007-000231-BOL



Aerial photograph of flood waters over Santa Ana recorded on 23 Feb. 2008 (Photo from La Palabra del Beni (Online) 24 Feb. 2008)



Legend

	Capital		Culvert
	Department Boundary		Ferry Crossing
	Capital		Bridge (General)
	Village / Town		River Forcing
	Airfield		Spot Height (m)
	Tower		Mine
	Power Plant		Oil / Gas Well
	National Park / Natural Monument		Main Road
	Secondary Road / Track		Railroad

FLOOD WATER ANALYSIS
Derived from MODIS Recorded on 24 February 2008

	Possible Flood Waters (24 Feb. 2008)		Clouds (not assessed) (24 Feb. 2008)
	Standing Flood Waters (24 Feb. 2008)		Preflood Water (12 Dec. 2005)

Map Scale for A3: 1:100,000
0 500 1000 2000 3000 4000 Meters

Satellite Data MODIS
Resolution 250m
Date 24 February 2008
Pre-crisis Sat. Data ENVISAT/ASAR (WSM)
Pre-crisis date image 12 Dec. 2005
Charter PM INA Argentina
Flood Analysis UNOSAT
Santa Ana Data Vectorized from Google Earth
GIS Data USGS, NOAA, UNJL, SALB
Elevation Data SRTM (30m) - NASA
Map Production UNOSAT (25 February 2008)
Projection UTM Zone 20 South
Datum WGS 1984

The depiction and use of boundaries, geographic names and related data shown here are not warranted to be error-free nor do they imply official endorsement or acceptance by the United Nations. This map was produced by the United Nations Institute for Training and Research (UNITAR) Operational Satellite Applications Program (UNOSAT). UNOSAT provides satellite imagery & related geographic information to UN humanitarian & development agencies & their implementing partners.

UNOSAT
satellite solutions for all
Contact Information: info@unosat.org
24/7 Hotline: +41 76 487 4998
www.unosat.org