

# DAMAGE ASSESMENT IN BANGUI, CENTRAL AFRICAN REPUBLIC

Analysis with Pleiades Data Acquired 6 June and 22 February 2014 and WorldView-2 Data Acquired 16 November 2013

This map illustrates locations of destroyed structures within the arrondissements of Bangui, Central African Republic. Using satellite imagery acquired 16 November 2013, 22 February 2014, and 6 June 2014 UNOSAT reviewed the city of Bangui to locate signs of destroyed structures. By 22 February 2014, a total of 1,872 structures were destroyed in the area of Bangui, with 1,341 structures detected in the 8 arrondissements and an additional 531 located in the surrounding area. As of

6 June 2014 a total of 368 damaged structures have been reconstructed and 871 additional structures have been severely damaged or destroyed since 22 February 2014. Pre-crisis imagery used for this analysis was collected on 16 November 2013, and thus structures destroyed previous to 16 November 2013 are not indicated on this map. This is a preliminary analysis & has not yet been validated in the field. Please send ground feedback to UNITAR / UNOSAT.

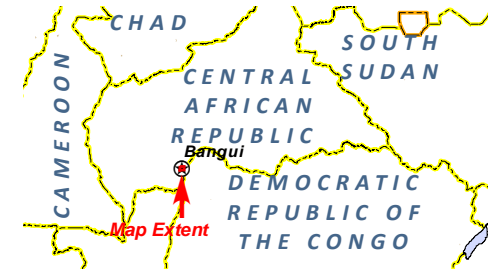
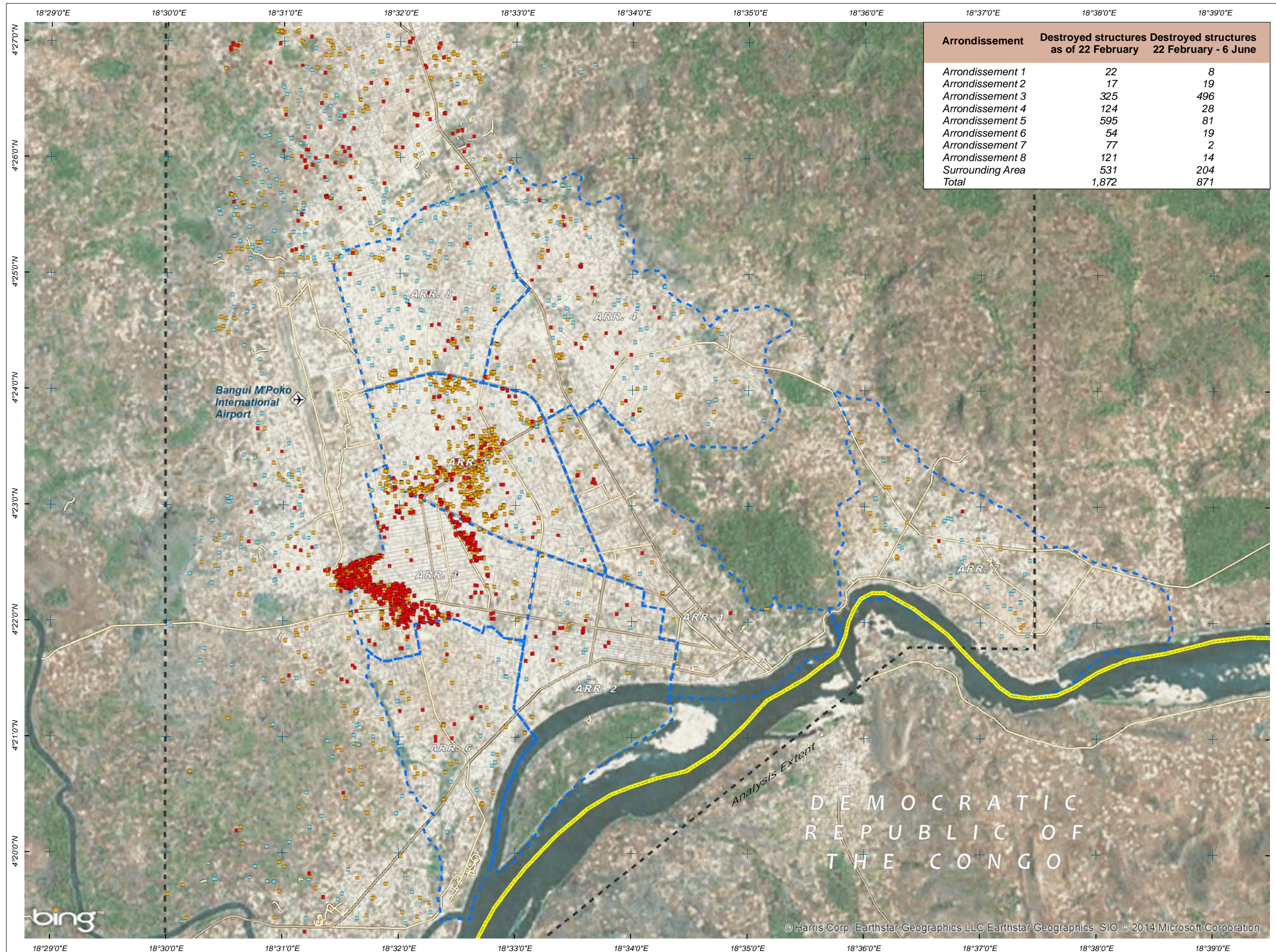
Complex  
Emergency



Production Date:  
02/07/2014

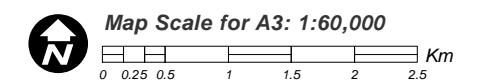
Version 1.0

Activation Number:  
CE20131212CAF



**LEGEND**

- Reconstructed structure as of 6 June
- Destroyed structure as of 22 February
- Destroyed structure between 22 February and 6 June
- Airport
- Highway/Primary Road
- Secondary Road
- Local/Urban Road
- International border
- Arrondissement Boundary



Satellite Data (1): Pleiades  
Imagery Dates: 6 June 2014  
Resolution: 50 cm  
Copyright: CNES 2013  
Source: Astrium Services / Spot Image  
Satellite Data (2): Pleiades  
Imagery Date: 22 February 2014  
Copyright: CNES 2013  
Source: Astrium Services / Spot Image  
Satellite Data (3): WorldView-2  
Imagery Date: 16 November 2013  
Copyright: DigitalGlobe  
Source: US Department of State, Humanitarian Information Unit, NextView License  
Road Data : OSM  
Analysis : UNITAR / UNOSAT  
Production: UNITAR / UNOSAT  
Analysis conducted with ArcGIS v10.1

Coordinate System: WGS 1984 UTM Zone 34N  
Projection: Transverse Mercator  
Datum: WGS 1984  
Units: Meter

The depiction and use of boundaries, geographic names and related data shown here are not warranted to be error-free nor do they imply official endorsement or acceptance by the United Nations. UNOSAT is a program of the United Nations Institute for Training and Research (UNITAR), providing satellite imagery and related geographic information, research and analysis to UN humanitarian and development agencies and their implementing partners.

This work by UNITAR/UNOSAT is licensed under a Creative Commons Attribution-NonCommercial-ShareAlike 3.0 Unported License.



# UNOSAT

Contact Information: [unosat@unitar.org](mailto:unosat@unitar.org)  
24/7 Hotline: +41 76 487 4998  
[www.unitar.org/unosat](http://www.unitar.org/unosat)