



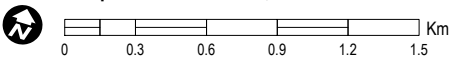
## Satellite detected water over Djibouti City, Djibouti District, Djibouti Region, Djibouti

This map illustrates satellite-detected flood water extent within the city of Djibouti, Djibouti District, Djibouti Region, Djibouti. The analysis was conducted analyzing post event Worldview-2 image acquired on the 20 May 2018, after the passage of Tropical Cyclone Sagar-18, and compared with a pre event WorldView-2 image acquired on 23 April 2018. As observed from the satellite image, the city of Djibouti has been severely affected by flash floods and heavy rains. As of 20 May 2018, ~50% of the city seems severely affected, mainly in the north central part, while the southern part, that includes the airport, appears partially affected. This is a preliminary analysis and has not yet been validated in the field. Please send ground feedback to UNITAR UNOSAT.

### Legend

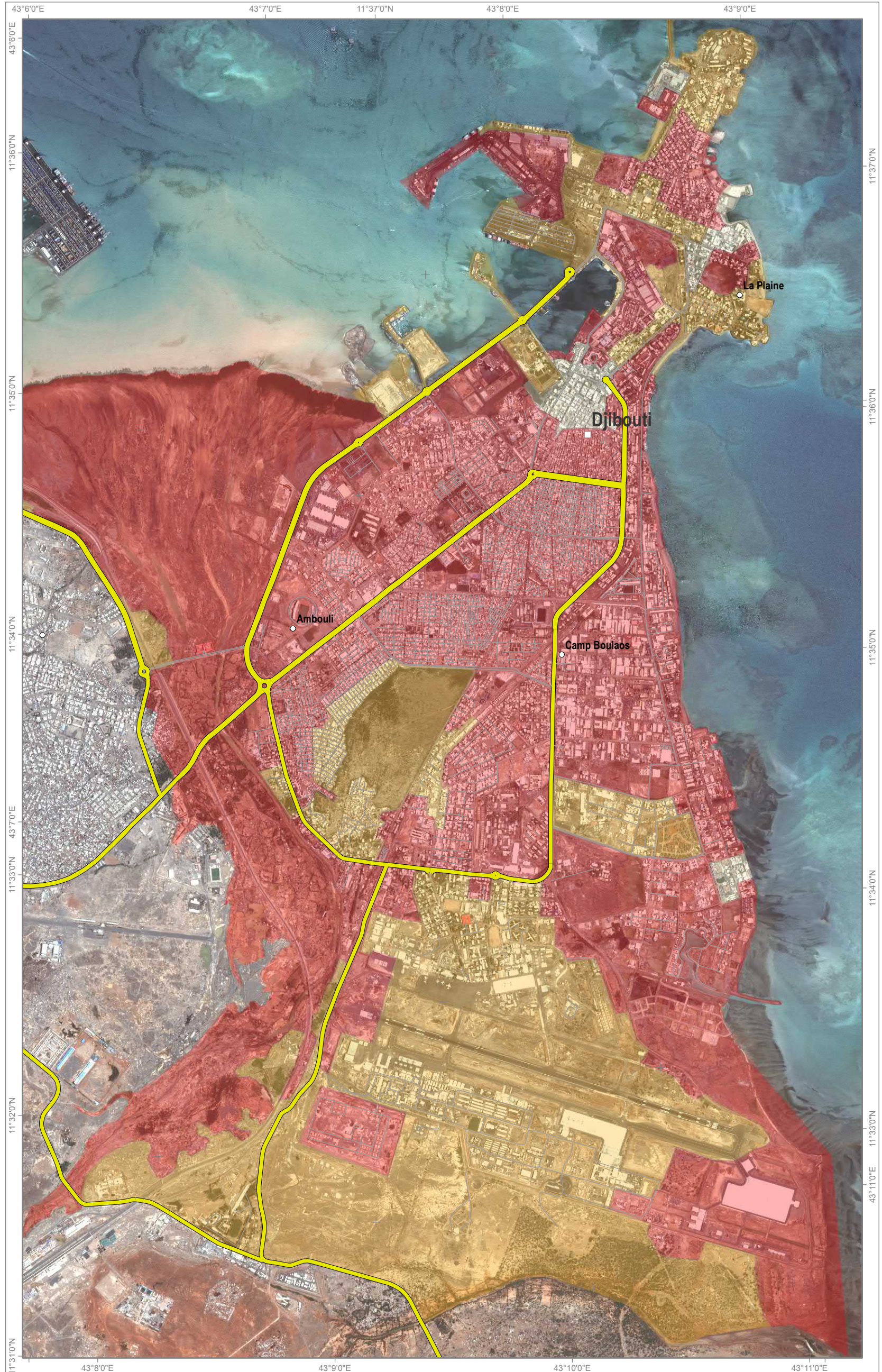
- Settlement
  - Town
  - Primary road
  - Secondary road
- Flood extent as of 20 May 2018
- Severely affected
  - Partially affected
  - Possibly affected

Map Scale for A3: 1:32,000



Analysis conducted with ArcGIS v10.4.1

Coordinate System: WGS 1984 UTM Zone 38N  
Projection: Transverse Mercator  
Datum: WGS 1984  
Units: Meter



Satellite Data (1): WorldView-2 Imagery Date (1): 20 May 2018 Satellite Data (2): WorldView-2 Imagery Date (2): 23 April 2018 Resolution: 50 cm Copyright: DigitalGlobe, Inc Source: USGS-HDDS	Satellite Data (3): Pleiades Imagery Date (3): 23 May 2018 Resolution: 50 cm Copyright: CNES 2018- Distribution Airbus Defence and Space / SPOT Image Source: Airbus Defence and	Space Settlements: NIMA Roads: OpenStreetMap Analysis: UNITAR - UNOSAT Production: UNITAR - UNOSAT
--	--	--



The depiction and use of boundaries, geographic names and related data shown here are not warranted to be error-free nor do they imply official endorsement or acceptance by the United Nations. UNOSAT is a program of the United Nations Institute for Training and Research (UNITAR), providing satellite imagery and related geographic information, research and analysis to UN humanitarian & development agencies & their implementing partners. This work by UNITAR-UNOSAT is licensed under a CC BY-NC 3.0.