



# FLOOD WATERS IN THE AFFECTED PROVINCES OF GUAYAS & LOS RIOS, ECUADOR - ATLAS SHEET : 1

Flood Analysis with ENVISAT-ASAR WSM Data Recorded 1 March 2008 and 20 December 2006

## UNOSAT - GDACS LIGHT MAP SERIES

Hyperlinked Atlas Map Sheets (1:250,000)

(Click the marked map zones (numbered 1-4) right for hyperlink to separate atlas map sheets at 1:250,000 scale)

This map illustrates satellite-detected flood waters over the affected provinces of Guayas & Los Rios, Ecuador. Flood water analysis was conducted by change detection with ENVISAT-ASAR WSM (150m) radar satellite data recorded on 1 March 2008 and 20 December 2006. This is a preliminary analysis & has not yet been validated in the field.

Flooding & Heavy Rainfall

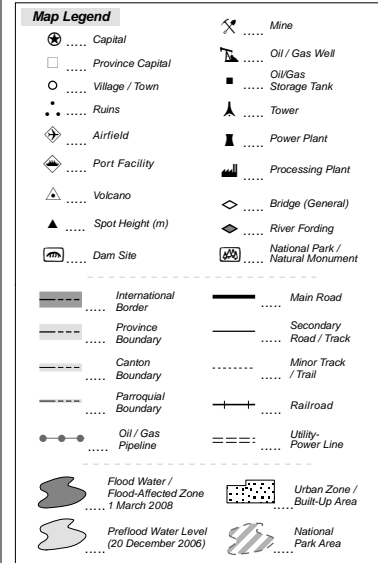
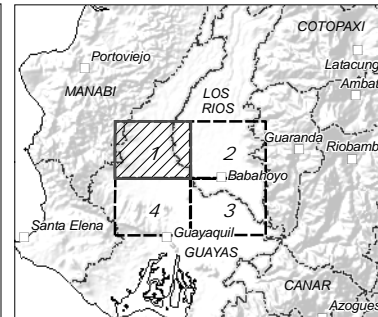
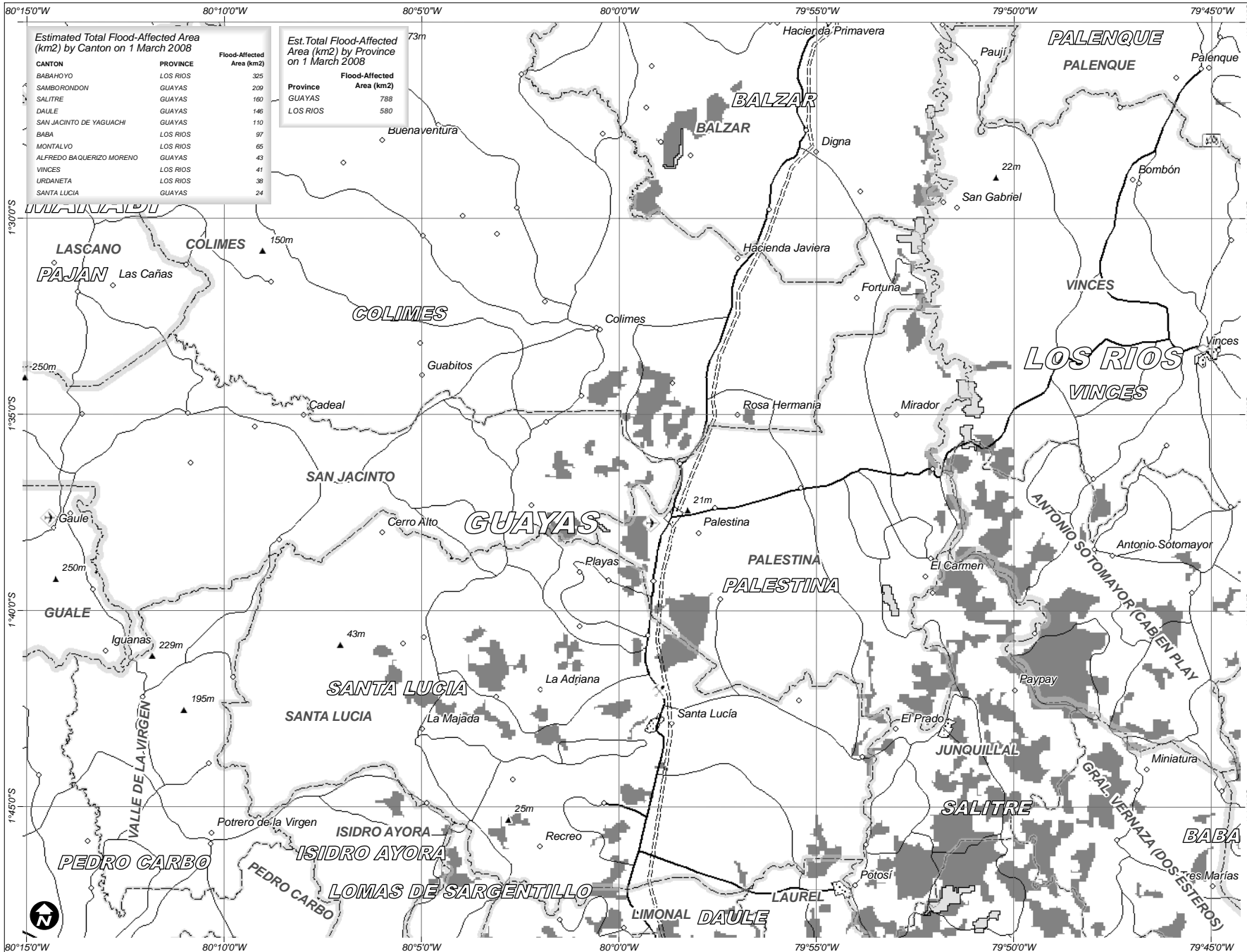
Atlas Map Sheet : 1

4 March 2008

Version 1.0

Glide No:

FL-2008-000018-ECU



**Map Scale for A4: 1:250,000**  
 0 0.5 1 2 3 4 5 6 7 8 9 Kilometers

Satellite Data ..... ENVISAT-ASAR-WSM  
 Radar Resolution ... 150m  
 Radar Dates ..... 1 March 2008 & 20 Dec. 2006  
 Radar Copyright ..... ESA (2008)  
 GIS Data ..... UGA, SAL3, USGS, WDPA  
 Map Production ..... UNOSAT (4 March 2008)  
 Projection ..... UTM Zone 17 South  
 Datum ..... WGS 1984

The depiction and use of boundaries, geographic names and related data shown here are not warranted to be error-free nor do they imply official endorsement or acceptance by the United Nations. This map was produced by the United Nations Institute for Training and Research (UNITAR) Operational Satellite Applications Program (UNOSAT). UNOSAT provides satellite imagery & related geographic information to UN humanitarian & development agencies & their implementing partners.

**UNOSAT**

satellite solutions for all

Contact Information: [info@unosat.org](mailto:info@unosat.org)  
 24/7 Hotline: +41 76 487 4998 [www.unosat.org](http://www.unosat.org)