

Rising Flood Waters of the Zambezi River in the Affected Districts of Mopeia & Marromeu, Zambezia & Sofala Provinces, Mozambique

Flood Analysis with MODIS Terra & Aqua Data Recorded 4 -13 January 2008 & 20 November 2007

Heavy Rainfall & Flooding 14 January 2008



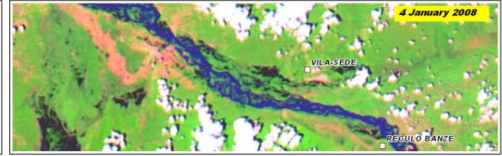
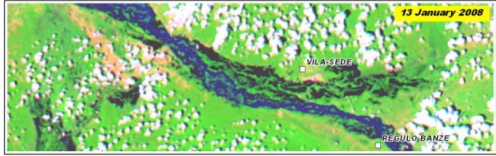
Version 1.1

Glide No: FL-2008-000004-MOZ

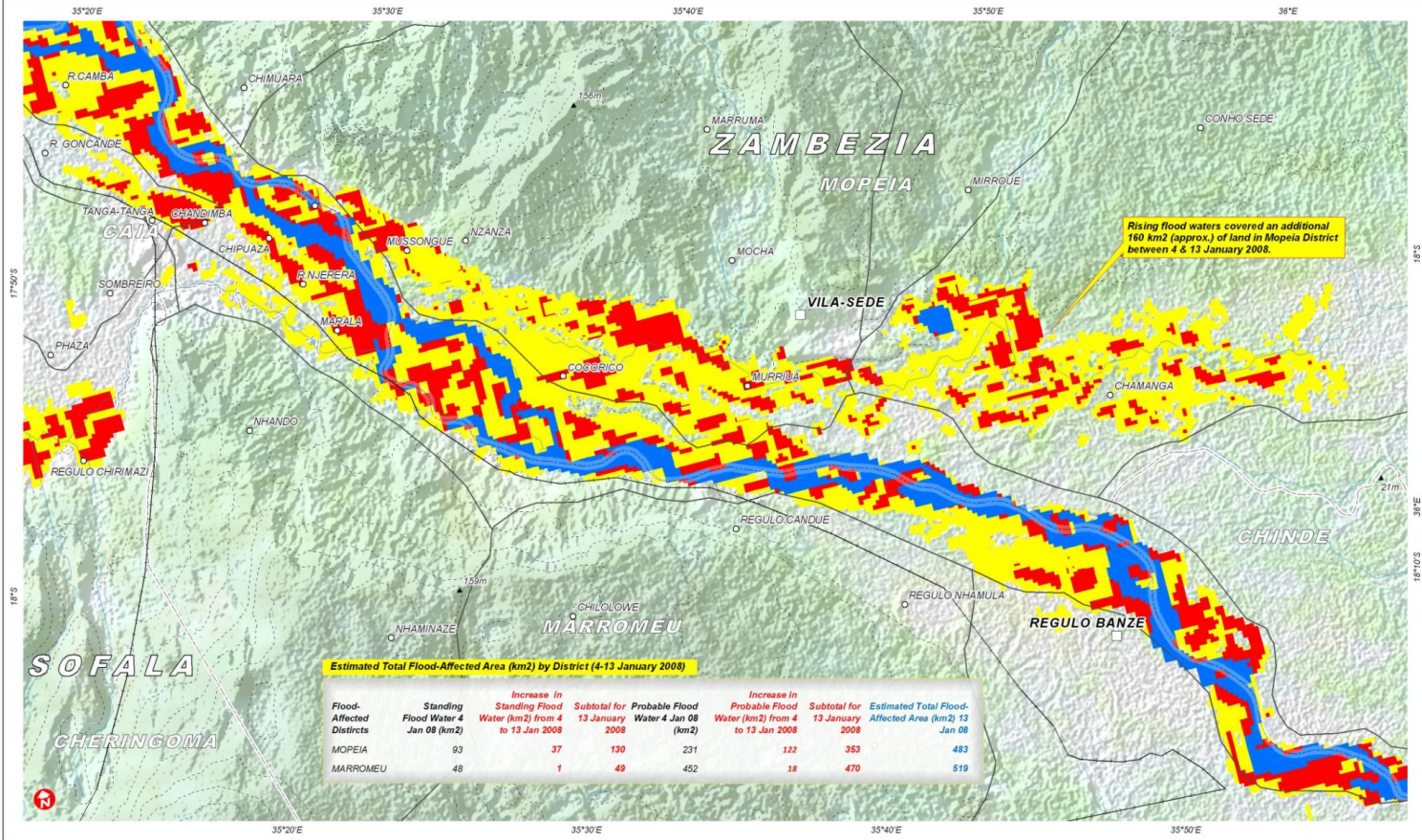
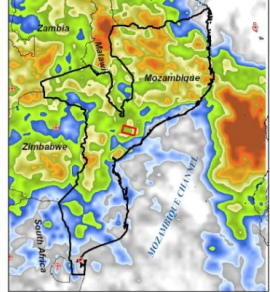
Map Information This map illustrates satellite-detected flood waters over the affected districts in central Mozambique. Flooded areas have been sorted into 3 classes: Red areas represent standing flood waters identified with a high degree of confidence. Yellow areas represent flood-affected areas, probably covered with standing water, identified with a lower degree of confidence. Blue areas represent pre-flood water levels identified from 20 November 2007. Estimates for flooded areas per district have been calculated in km², represent approximate values only and indicate a increase in flood water from 4 to 13 January 2008. This flood detection is a preliminary analysis & has not yet been validated in the field. The rainfall estimate was derived from the Tropical Rainfall

Monitoring Mission (TRMM) precipitation dataset at a spatial resolution of approximately 25km for this region. It is possible that precipitation levels may have been underestimated for local areas, and is not a substitute for ground station measurements. The depiction and use of boundaries, geographic names and related data shown here are not warranted to be error-free nor do they imply official endorsement or acceptance by the

United Nations. This map was produced by the United Nations Institute for Training and Research (UNITAR) Operational Satellite Applications Program (UNOSAT). UNOSAT provides satellite imagery and related geographic information to UN humanitarian and development agencies and their implementing partners.



Rainfall Total (9 Dec. 2007 - 9 Jan. 2008)



Map Legend

- Capital
- City or Town
- Town / Village
- Port Facility
- Airport
- International Border
- Province Boundary
- District Boundary
- Road
- Railroad
- Drainage Line
- Elevation Contour (25m)

MODIS Flood Water Classification

- Pre-Flood Waters (20 Nov 2007)
- Standing Flood Waters (4-13 January 2008)
- Probable Flood Waters / Flood-Affected Area (4-13 January 2008)

Map Scale for A3: 2.5 Kilometers
1 centimeter equals 2.5 kilometers
Data Frame Rotated 17.4 degrees from North

Kilometers 0 1 2 3 4 5 6
Miles 0 1 2 3 4 5 6

Satellite Data: MODIS Terra & Aqua (NASA)
Resolution: 500m/250m
Date Series: 20 Nov. 2007 & 4-13 Jan. 2008
Flood Analysis: UNOSAT
Rainfall Data: TRMM (NASA)
Resolution: 0.25 deg
Date Series: 9 Dec. 2007 - 9 January 2008
Hydrology Data: HydroSheds (USGS)
Other GIS Data: NGA, USGS, WHO, UNILC
Map Production: UNOSAT (10 January 2008)
Projection: UTM, Zone 36 South
Datum: WGS 1984

UNOSAT satellite solutions for all

Contact Information: info@unosat.org
24/7 Hotline: +41 76 487 4998
Web Address: www.unosat.org