



**unitar**  
United Nations Institute for Training and Research

# UNOSAT

Production Date: 10/17/2014

Version 1.0

Activation Number:

CE20130604SYR



## SITUATION UPDATE FOR KOBANI, ALEPPO GOVERNORATE, SYRIAN ARAB REPUBLIC

Based on satellite imagery acquired 15 October 2014



Copyright: 2014 DigitalGlobe

The image shows destruction at the eastern part of the city of Kobani. Several buildings appear destroyed or heavily damaged; craters and roadblocks are also visible.

Center Coordinates: 38°22'2.57"E 36°53'19.62"N

This report provides an overview of the situation in the town of Kobani as of 15 October 2014, using high resolution imagery collected by the WorldView-2 satellite. UNOSAT reviewed the town for indicators of damage and destruction and signs of ongoing fighting such as active fires, craters and fortifications. Imagery shows widespread damage along the city and numerous destroyed and severely damaged structures and craters caused by munitions impacts. Roadblocks were detected and vehicle traffic is almost entirely absent throughout the town. UNOSAT also identified the presence of trenches and fortified fighting lines on the eastern side of the town. Hundreds of vehicles are also visible on the Syrian side of the border clustered around the border crossing points. **Note that this analysis is not comprehensive as the satellite image utilized featured significant cloud cover.**

UNITAR / UNOSAT

[unosat@unitar.org](mailto:unosat@unitar.org)

Palais des Nations,

Geneva, Switzerland

T: +41 22 767 4020

24/7 hotline: +41 76 487 4998

[www.unitar.org/unosat](http://www.unitar.org/unosat)

Satellite Data (1): WorldView-2  
Imagery Dates: 15 October 2014  
Resolution: 50 cm  
Copyright: DigitalGlobe, Inc.  
Satellite Data (2): WorldView-2  
Imagery Date: 6 September 2014  
Copyright: DigitalGlobe, Inc.  
Other Data: USGS, UNCS, NASA,

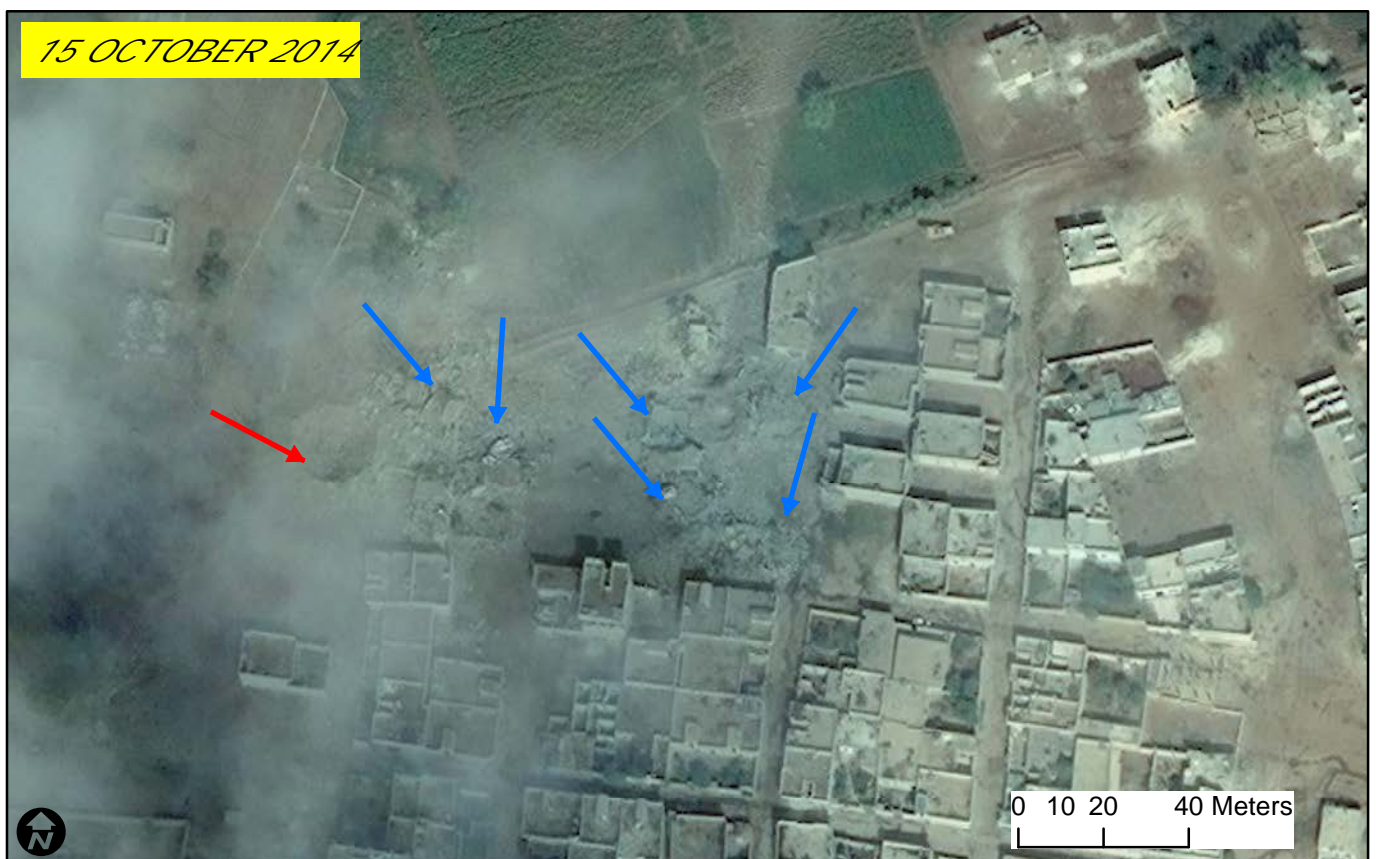
NGA  
Analysis : UNITAR / UNOSAT  
Production: UNITAR / UNOSAT  
Analysis conducted with ArcGIS  
v10.2  
Coordinate System: WGS 1984 UTM  
Zone 37N  
Projection: Transverse Mercator

Datum: WGS 1984  
Units: Meter

The depiction and use of boundaries, geographic names and related data shown here are not warranted to be error-free nor do they imply official endorsement or acceptance by the United Nations. UNOSAT is a program of the United Nations Institute for Training and Research (UNITAR), providing satellite imagery and related geographic information, research and analysis to UN humanitarian and development agencies and their implementing partners. This work by UNITAR/UNOSAT is licensed under a Creative Commons Attribution-NonCommercial-ShareAlike 3.0 Unported License.



*Figure 1: Destroyed and damaged structures in Kobani*



*The figure shows a portion of the northern part of the town of Kobani where several buildings are destroyed or severely damaged (blue arrows), possibly by air strikes. A large crater is also visible next to the damaged structures (red arrow). Images copyright 2014 DigitalGlobe.*

*Figure 2: Roadblocks and fortified fighting line*



*Imagery shows roadblocks and access control points placed along the roads preventing access to the town (blue arrows). A probable fortified fighting line is also visible in the imagery (red arrow). Images copyright 2014 DigitalGlobe.*



*Figure 3: Munitions impact craters on fields*



UNOSAT also detected numerous munitions impact craters on the fields (blue arrows) in and around Kobani. Images copyright 2014 DigitalGlobe.

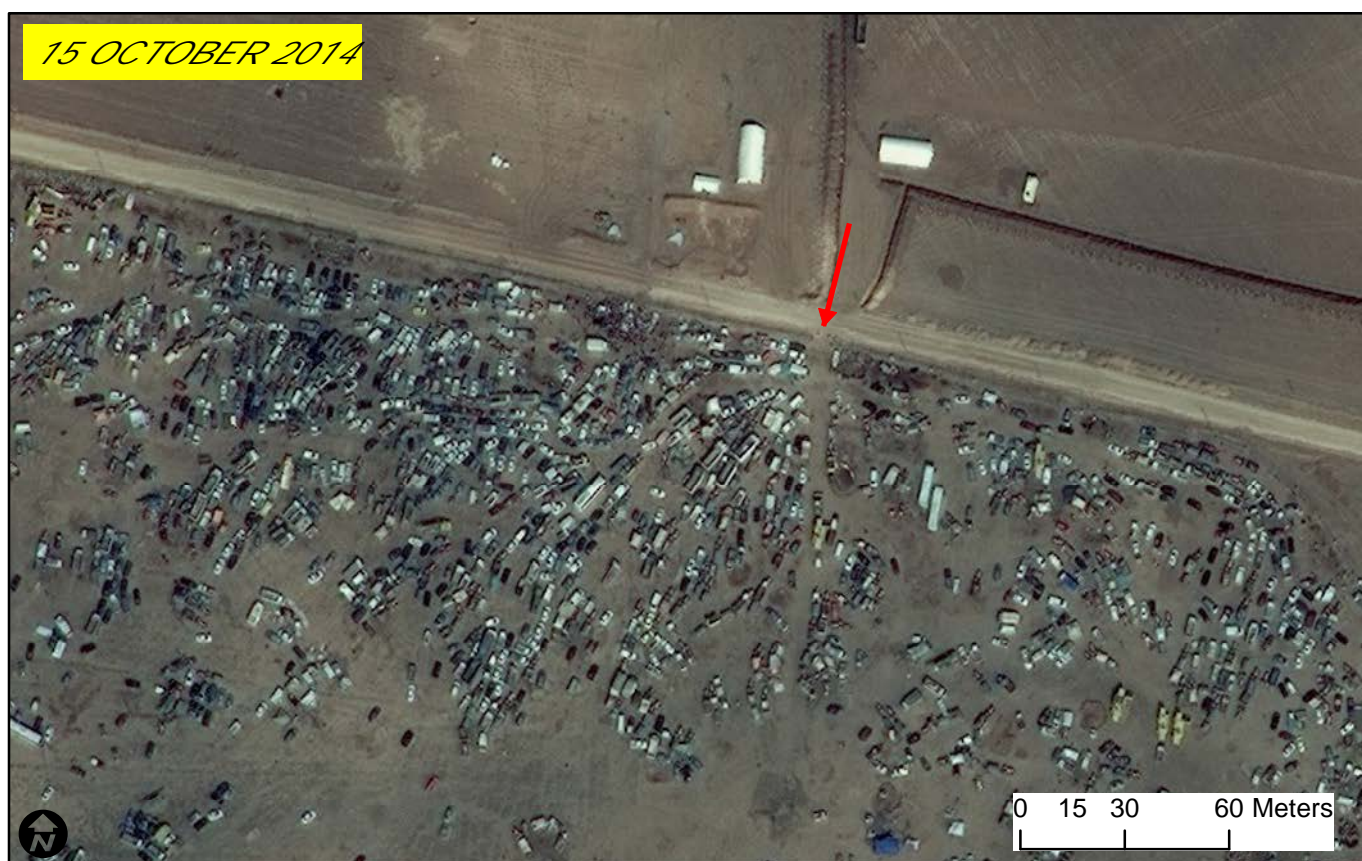
*Figure 4: Fortified fighting position*



*A fortified fighting position is visible inside of the town (red arrow) in the proximity of an access road with restricted access. Images copyright 2014 DigitalGlobe.*



*Figure 5: Vehicles at border crossing point*



*Hundreds of vehicles are also visible on the Syrian side of the border clustered around a border crossing point (red arrow). In addition on the Turkish side of the border a portion of the ground has been prepared for the storage of cars. Images copyright 2014 DigitalGlobe.*



*Figure 6: Newly constructed refugee settlement*



*Close to the border, on the Turkish side a refugee camp has been created in order to accommodate increased number of refugees fleeing Kobani. Images copyright 2014 DigitalGlobe.*