



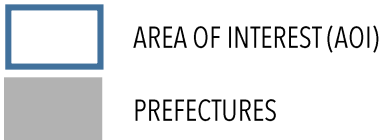
23 OCTOBER 2019

**PRELIMINARY SATELLITE-DERIVED FLOOD ASSESSMENT IN BANGASSOU,
CENTRAL AFRICAN REPUBLIC**

STATUS: NO SATELLITE-DETECTED WATERS IDENTIFIED

FURTHER ACTION(S): CONTINUE MONITORING

OVERVIEW



Date of assessment validity:

Impact and severity*:

- undetected
- limited impact potentially detected
- significant impact potentially detected

Data sources:

- (1) pre-event (reference) image: © 2019 Bing
- (2) post-event images: Pleiades, 23 October 2019 11:0435 UTC © 2019 Airbus Defence & Space
- (3) baseline data
 - administrative boundaries: HDX
 - locations: HDX
 - transportation network: OSM
 - building or settlements: OSM
 - population: WorldPop

Potentially affected elements at risk (indicate all that are applicable):

- buildings - residential
- buildings - commercial/industry
- vulnerable structures (e.g. schools, hospitals, water, sanitation, power stations, etc.)
- internally displaced persons (IDP) camps
- transportation network
- agriculture
- other:

* disclaimer (i.e. assessment has yet to be validated with field-based information)

AOI 1 / BANGASSOU CITY, MBOMOU PREFECTURE, CENTRAL AFRICAN REPUBLIC / NO FLOODS DETECTED



NO SATELLITE-DETECTED
WATERS OVER AOI 1

2 INSET IMAGES (A, B) WITHIN
AOI 1 ZOOM INTO SETTLEMENT
AREAS

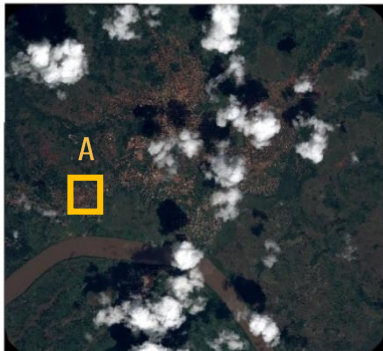


BING basemap



PLEIADES 23 OCTOBER 2019 11:04:35 UTC

AOI 1 / BANGASSOU CITY, MBOMOU PREFECTURE, CENTRAL AFRICAN REPUBLIC / NO FLOODS DETECTED



FIRST ZOOM-IN IN AOI 1
OVER THE CENTRE DE
SANTÉ DE MALIKO



BING basemap



PLEIADES 23 OCTOBER 2019 11:04:35 UTC

AOI 1 / BANGASSOU CITY, MBOMOU PREFECTURE, CENTRAL AFRICAN REPUBLIC / NO FLOODS DETECTED



SECOND ZOOM-IN IN AOI 1



PLEIADES 23 OCTOBER 2019 11:04:35 UTC

SUMMARY OF PRELIMINARY OBSERVATIONS AND FURTHER ACTIONS

Date of assessment validity: 23 October 2019

Preliminary observations, impact and severity *:

- AOI 1: No satellite-detected waters were observed along the Mbomou river in Bangassou as of 23 October 2019

Further/ anticipated actions from UNOSAT:

- no impact detected/ discontinue monitoring over specific AOI
- potential impact detected continue monitoring over specific AOIs full assessment to be conducted
- more data and/ or information needed to confirm impact severity

* disclaimer (i.e. assessment has yet to be validated with field-based information)