











### Satellite detected water extent as of 27 July 2018 over Sanamxay District, Attapeu Province, Lao PDR

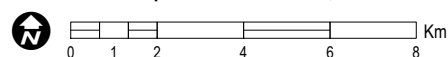
This map illustrates the satellite-detected surface waters extent in Sanamxay district, Attapeu province, as observed from the TerraSar-X and Tandem-X radar imagery acquired on 27 July 2018. Satellite detected water extent analysis was performed by Centro Internazionale In Monitoraggio Ambientale Research (CIMA) & Luxembourg Institute of Science and Technology (LIST). Within the analyzed area, a total of 7,405 ha were detected as inundated, four days after the collapse of the dam. Disclaimer: Flood extent maps are derived from high quality satellite data using a scientifically validated retrieval algorithm. No liability concerning the contents or the use thereof is assumed by the producer. The information has limitations due to the quality and resolution of the original data sources, as well as the uncertainties associated with the retrieval algorithm. Please be aware that the thematic accuracy might be lower in urban and forested areas due to inherent limitations of the SAR analysis technique. This is a preliminary analysis and has not yet been validated in the field. Please send ground feedback to UNITAR - UNOSAT.

#### Legend

-  Collapsed dam
-  Populated place
-  Potential affected village
-  Local/Urban road
-  Reference water
-  Flood water extent as of 27 July 2018
-  Province boundary
-  District boundary

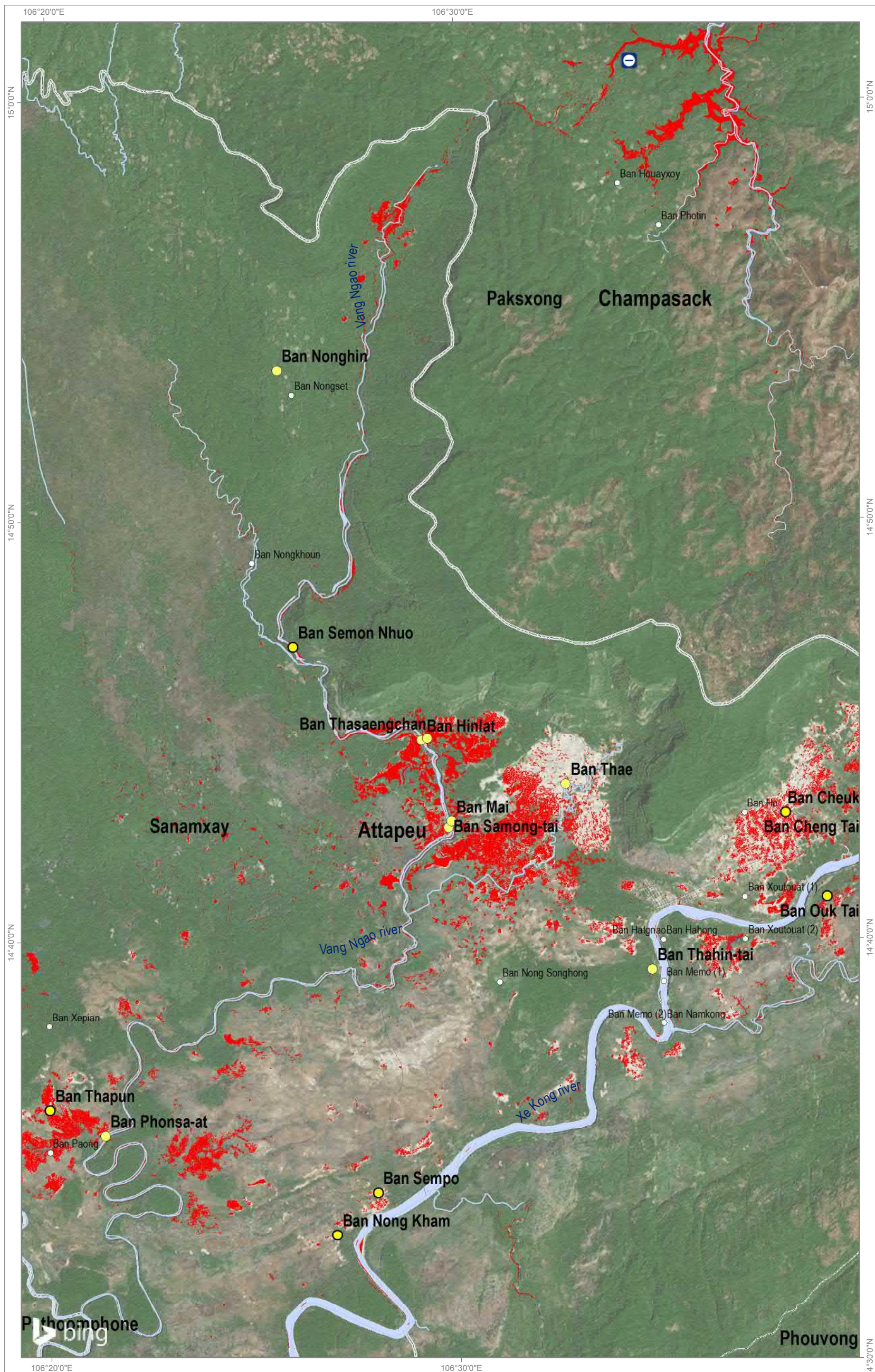


Map Scale for A3: 1:175,000



Analysis conducted with ArcGIS v10.4.1

Coordinate System: WGS 1984 UTM Zone 48N  
Projection: Transverse Mercator  
Datum: WGS 1984  
Units: Meter



Satellite Data (Post): TerraSAR-X & TanDEM-X  
Imagery date: 27 July 2018  
Resolution: 2.5 cm & 1.5 cm  
Copyright: DLR e. V. 2018, Distribution Airbus DS  
Geo GmbH  
Source: DLR

Other data: OCHA ROAP, WFP  
Waterways: Open Street Map  
Roads: Open Street Map  
Analysis: CIMA & LIST  
Production: UNITAR - UNOSAT



The depiction and use of boundaries, geographic names and related data shown here are not warranted to be error-free nor do they imply official endorsement or acceptance by the United Nations. UNOSAT is a program of the United Nations Institute for Training and Research (UNITAR), providing satellite imagery and related geographic information, research and analysis to UN humanitarian & development agencies & their implementing partners. This work by UNITAR-UNOSAT is licensed under a CC BY-NC 3.0