

LANDSLIDE INDUCED DAM OVER TONZANG TOWNSHIP, CHIN DIVISION, MYANMAR

Analysis with Pleiades and WorldView-2 Data Acquired 16 September 2015 and 12 January 2013

This map illustrates satellite-detected waters over Tonzang township, Chin Division, Myanmar. UNITAR-UNOSAT analyzed imagery collected by the Pleiades satellite on 16 September 2015 and detected the presence of a landslide over a mountainous area in Tonzang township. As a consequence of the landslide waters have accumulated in

the area forming a dam. Imagery shows that a total of 34 hectares are covered by water. The heavy cloud cover in the area prevents UNOSAT from determining the exact dimension of the landslide. This is a preliminary analysis & has not yet been validated in the field. Please send ground feedback to UNITAR / UNOSAT.

Flooding



Production Date:
16/09/2015

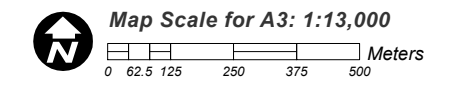
Version 1.0

Activation Number:
FL-2015-000089-MMR



LEGEND

-  Cloud obstructed areas
-  Satellite detected waters



Disaster coverage by the International Charter 'Space and Major Disasters'. For more information on the Charter, which is about assisting the disaster relief organizations with multi-satellite data and information, visit www.disasterscharter.org



Satellite Data (1): Pleiades
Imagery Dates: 16 September 2015
Resolution: 50 cm
Copyright: © CNES (2015)
Source: Airbus Defense and Space all rights reserved
Satellite Data (2): Worldview-2
Imagery Date: 12 January 2013
Copyright: DigitalGlobe Inc
Source: USGS/HDDS
Road Data : Google Map Maker / OSM / ESRI
Other Data: USGS, UNCS, NASA, NGA
Analysis : UNITAR / UNOSAT
Production : UNITAR / UNOSAT
Analysis conducted with ArcGIS v10.3

Coordinate System: WGS 1984 UTM zone 46N
Projection: Transverse Mercator
Datum: WGS 1984
Units: Meter

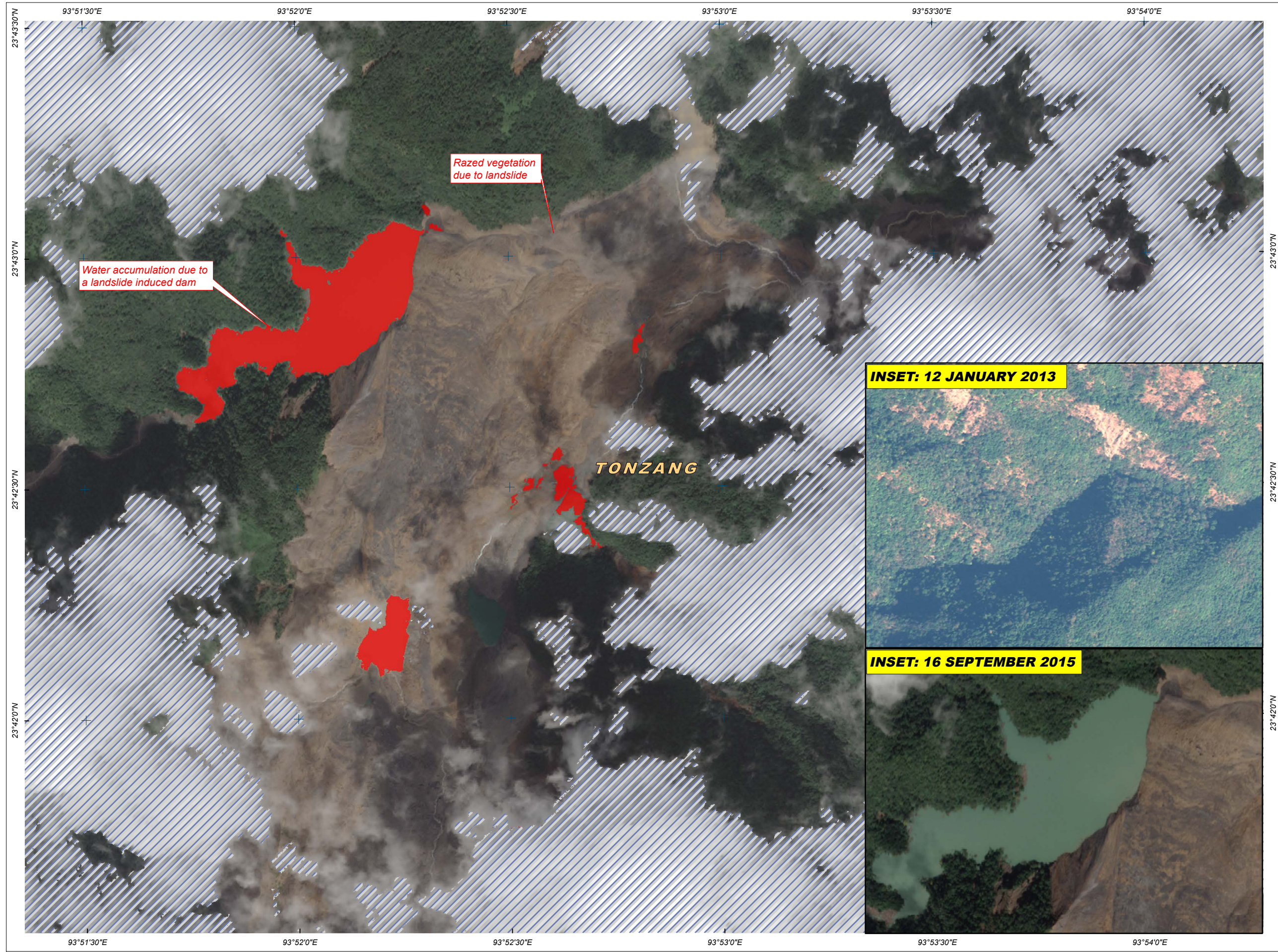
The depiction and use of boundaries, geographic names and related data shown here are not warranted to be error-free nor do they imply official endorsement or acceptance by the United Nations. UNOSAT is a program of the United Nations Institute for Training and Research (UNITAR), providing satellite imagery and related geographic information, research and analysis to UN humanitarian and development agencies and their implementing partners.

This work by UNITAR/UNOSAT is licensed under a Creative Commons Attribution-NonCommercial-ShareAlike 3.0 Unported License.



UNOSAT

Contact Information: unosat@unitar.org
24/7 Hotline: +41 76 487 4998
www.unitar.org/unosat



INSET: 12 JANUARY 2013



INSET: 16 SEPTEMBER 2015

