

FLOOD WATER EVOLUTION OVER TOWN DIFFA AND SURROUNDING AREAS, NIGER

Analysis with MODIS Aqua Data Acquired 02 December, 2012 & MODIS Terra Data Acquired 11 November, 2012

This map illustrates satellite-detected probable extent of flood water evolution in the City of Diffa and surrounding areas in Niger as of 02 December, 2012. For extracting the initial flood water extent a MODIS Terra image of 11 November 2012 was used and for extracting the recent flood water extent a MODIS Aqua Image of 02 December, 2012 was used. Please note

that the exact limit of the flood waters is uncertain because of the relatively low spatial resolution of the satellite sensors used for this analysis. Detected water bodies likely reflect an underestimation of all flood-affected areas within the map extent. This analysis has not yet been validated in the field. Please send ground feedback to UNITAR / UNOSAT.

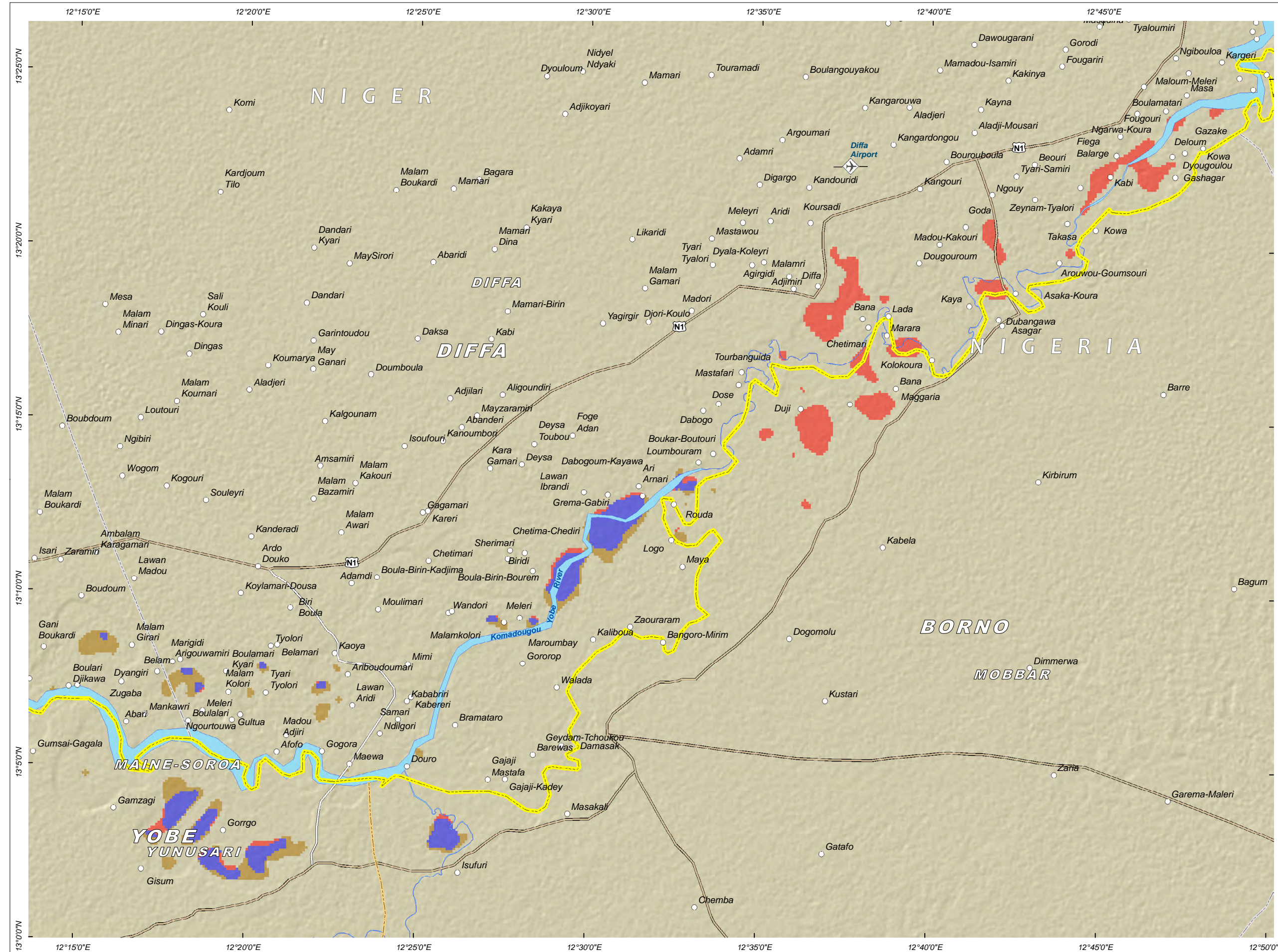
Production Date:

05/12/2012



Version 1.0

Activation Number:
UNOSAT - FL20121203NER

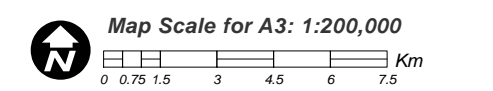


LEGEND

- Major City / Town
- International Boundary
- Populated Places
- Administrative Boundary
- Main Airport
- Primary Road

FLOOD WATER EXPANSION ANALYSIS

- (Relative Change in Flood Water Extent)**
- Increase in Flooded Water Extent From 11 Nov 2012 to 02 Dec 2012
 - Unchanged Flood Water Extent From 11 Nov 2012 to 02 Dec 2012
 - Decrease in Flood Water Extent From 11 Nov 2012 to 02 Dec 2012
 - Pre-Flood Water Extent



Satellite Data (1): MODIS Aqua
Imagery Date: 02 Dec 2012
Resolution: 250m
Copyright: NASA
Source: NASA

Satellite Data (2): MODIS Terra
Imagery Date: 11 Nov 2012
Copyright: NASA
Source: NASA

Road Data : Google Map Maker / OSM / ESRI
Hydrology : Google Map Maker
Other Data: USGS, UNCS, NASA, NGA, ESRI
Analysis : UNITAR / UNOSAT
Production: UNITAR / UNOSAT
Analysis conducted with ArcGIS v10.1

Coordinate System: WGS 1984 UTM Zone 33N
Projection: Transverse Mercator
Datum: WGS 1984
Units: Meter

The depiction and use of boundaries, geographic names and related data shown here are not warranted to be error-free nor do they imply official endorsement or acceptance by the United Nations. UNOSAT is a program of the United Nations Institute for Training and Research (UNITAR), providing satellite imagery and related geographic information, research and analysis to UN humanitarian and development agencies and their implementing partners.

This work by UNITAR/UNOSAT is licensed under a Creative Commons Attribution-NonCommercial-



UNOSAT

Contact Information: unosat@unitar.org
24/7 Hotline: +41 76 487 4998
www.unitar.org/unosat