



unitar
United Nations Institute for Training and Research

UNOSAT

Monsoon Rains & Flooding

28 August 2010

Version 4 - 23:00UTC

FL-2010-000141-PAK



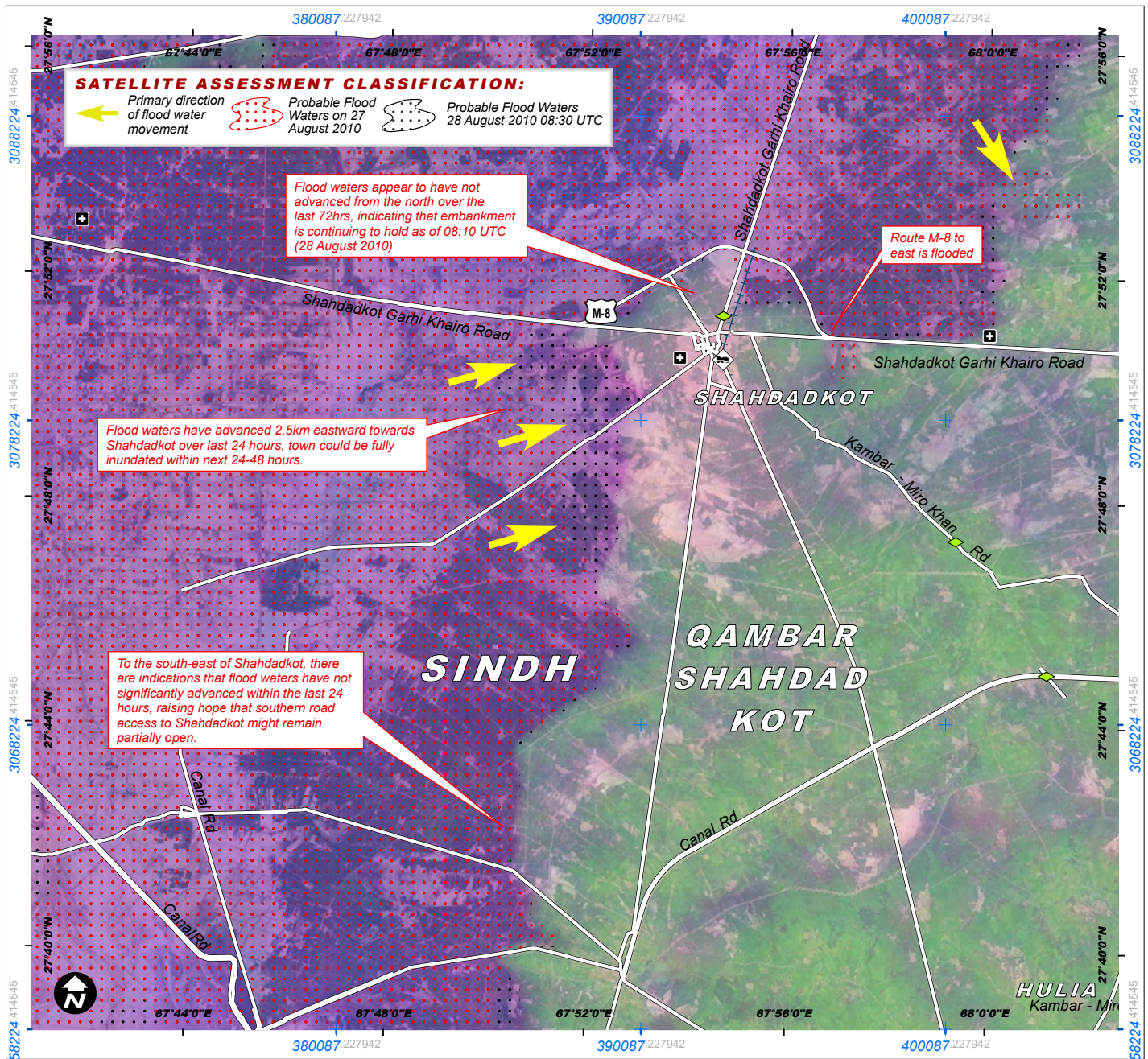
SITUATION UPDATE 4: SHAHDADKOT UNDER IMMINENT THREAT OF FLOODING, SINDH PROVINCE

Flood Update Based on MODIS Satellite Data Recorded 28 August 2010 - 08:30 UTC

This is the fourth situational update on the status of flood waters advancing on the city of Shahdadkot, based on satellite data recorded today at 08:30 UTC (28 August 2010). Flood waters have continued to advance 2.5km eastward towards Shahdadkot over last 24 hours constituting now an imminent threat that the town could be flooded within the next 24-48

hours. Immediately north of Shahdadkot, the reported makeshift embankment continues to hold. To the south-east of Shahdadkot, there are indications that flood waters have not significantly advanced within the last 24 hours, raising hope that southern road access to Shahdadkot might remain partially open. This situational analysis is based on a rapid visual

assessment of the current satellite data available over this area and will be revised and updated as new data becomes available; this analysis has not yet been validated in the field. Please send ground feedback to UNITAR / UNOSAT.



- Health Facility
- Airport / Airfield
- Barrage
- Bridge
- Primary Road
- Secondary Road
- Railroad
- Train station

Disaster coverage by the International Charter 'Space and Major Disasters'. For more information on the Charter, which is about assisting the disaster relief organizations with multi-satellite data and information, visit www.disasterscharter.org

Map Scale for A4: 1:200,000



The depiction and use of boundaries, geographic names and related data shown here are not warranted to be error-free nor do they imply official endorsement or acceptance by the United Nations. UNOSAT is a program of the United Nations Institute for Training and Research (UNITAR), providing satellite imagery and related geographic information, research and analysis to UN humanitarian & development agencies & their implementing partners.



Crisis Satellite Data (1)	MODIS Aqua & Terra
Resolution	250 meters
Image Date	23-28 August 2010
Source	NASA Rapid Response
GIS Data	NGA, OCHA, USGS, OSM
Transport Data	Google Map Maker
Transport Data Copyright	© 2009 Google - Improve with Google Map Maker
Reference Imagery	ESRI WMS 2010
Hospital Data	WHO
Background Imagery	Landsat-7 / MODIS fusion
Flood Analysis	UNITAR / UNOSAT
Projection	UTM Zone 42N
Datum	WGS-84

UNOSAT / UNITAR
Palais des Nations,
Geneva, Switzerland
T: +41 22 767 4020 (UNOSAT Operations)
24/7 hotline: +41 76 487 4998
E-mail: emergencymapping@unosat.org
www.unosat.org