



unitar
United Nations Institute for Training and Research

UNOSAT

Monsoon Rains & Flooding

31 August 2010

Version 4 - 14:00UTC

FL-2010-000141-PAK

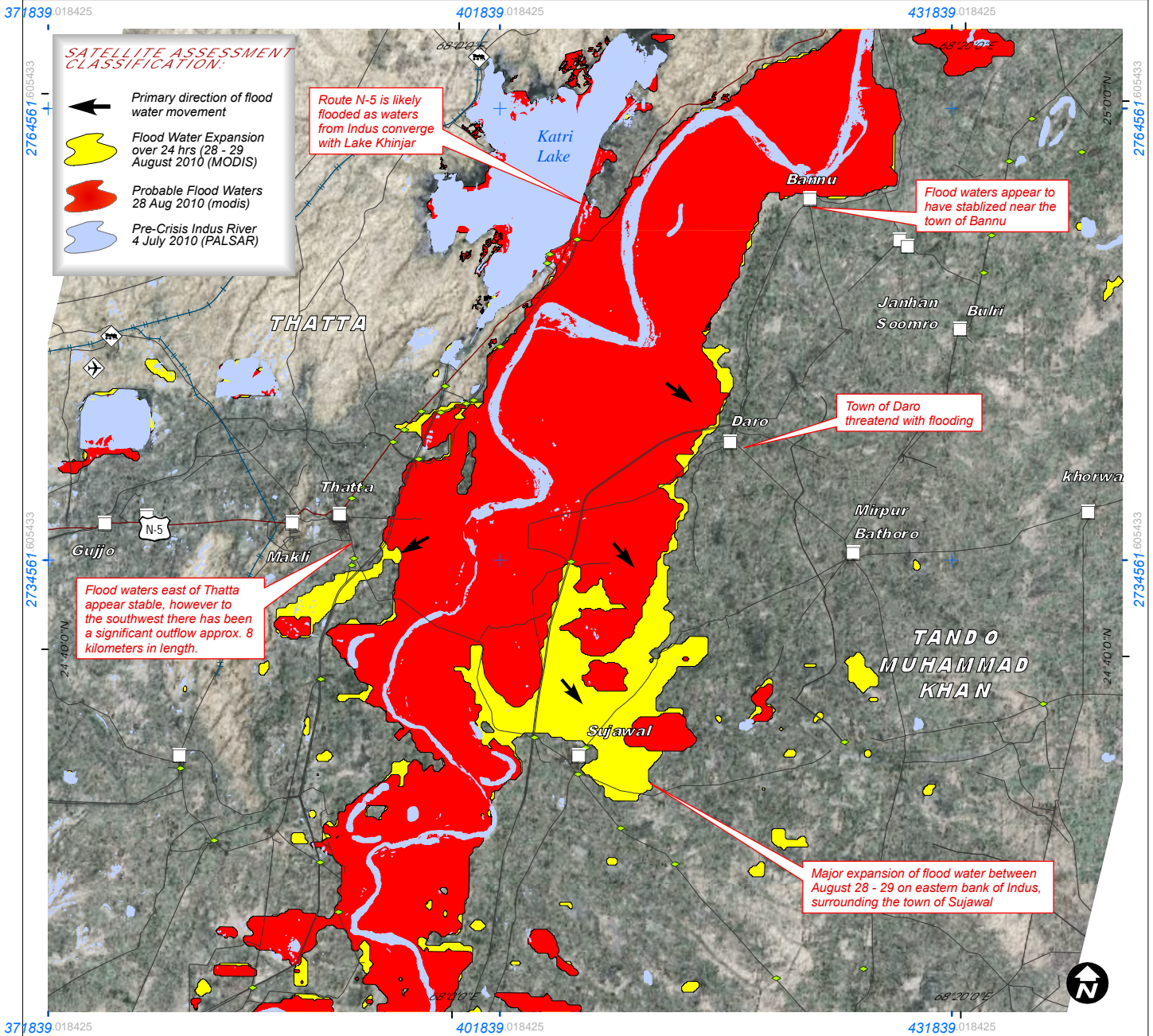
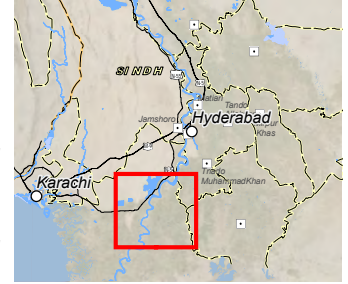
SITUATION UPDATE 4: RISING FLOOD WATERS IN THATTA AND SUJAWAL

Analysis Based on MODIS Data Recorded 28 and 29 August (08:30 UTC) & PALSAR Data Recorded 19 & 21 August 2010

This is the fourth situational update on the status of rising flood waters between the cities of Thatta and Sujawal, in Thatta district based on a time series of MODIS satellite data recorded 29 August at 09:10 UTC. There has been a major expansion of flood water on eastern bank of the Indus river, threatening the towns of Thatta and Sujawal. Water has advanced. The flood waters

have advanced over 14km at its furthest point between August 28 – 29; threatening to surround the city of Sujawal which remains at high risk. Sections of route N-5 north of Thatta remain likely flooded; the towns of Bannu and Daro on the eastern bank of the Indus also remain threatened. Due to cloud cover over the region, more recent imagery has not been processed

over this area. This situational analysis is based on a rapid visual assessment of the current satellite data available over this area and will be revised and updated as new data becomes available; this analysis has not yet been validated in the field. Please send ground feedback to UNITAR / UNOSAT.



- Airport / Airfield
- Barrage
- Bridge
- Primary Road
- Secondary Road
- Railroad
- Train station

Disaster coverage by the International Charter "Space and Major Disasters". For more information on the Charter, which is about assisting the disaster relief organizations with multi-satellite data and information, visit www.dfsasterscharter.org

Map Scale for A4: 1:400,000



The depiction and use of boundaries, geographic names and related data shown here are not warranted to be error-free nor do they imply official endorsement or acceptance by the United Nations. UNOSAT is a program of the United Nations Institute for Training and Research (UNITAR), providing satellite imagery and related geographic information, research and analysis to UN humanitarian & development agencies & their implementing partners.



Crisis Satellite Data (1) : ALOS PALSAR (FBD HH-HV)
Resolution : 25 meters
Image Date : 19 August & 4 July 2010
Source : JAXA, METI
Crisis Satellite Data (1) : MODIS Aqua & Terra
Resolution : 250 meters
Image Date : 26-29 August 2010
Source : NASA Rapid Response
GIS Data : NASA Rapid Response
Transport Data : Google Map Maker
Projection : UTM Zone 42N - WGS-84

UNOSAT / UNITAR
Palais des Nations,
Geneva, Switzerland
T: +41 22 767 4020 (UNOSAT Operations)
24/7 hotline: +41 76 487 4998
E-mail: emergencymapping@unosat.org
www.unosat.org