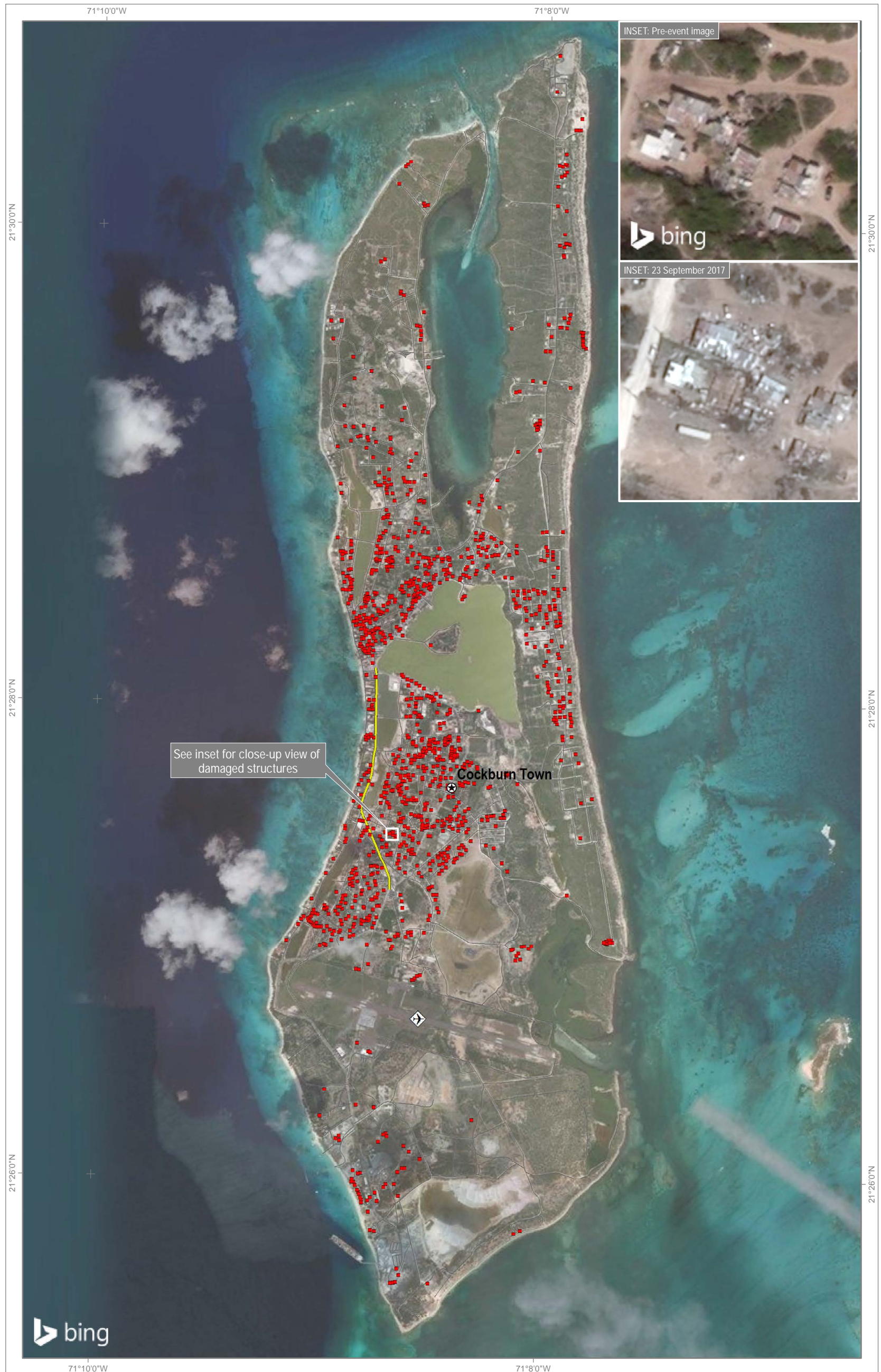


Damage Assessment in Grand Turk Island

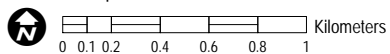
This map illustrates satellite detected potentially damaged buildings in Grand Turk island following the landfall of Tropical Cyclones IRMA-17 on 07 September 2017 and Maria on 22 September 2017. UNITAR-UNOSAT analysis used a Pleiades satellite image acquired on 23 September 2017 as post imagery. We identified 1,239 potentially damaged structures within the analyzed area. According to the pre-building footprints provided by Humanitarian Open Street Map, this represents ~49% of the total number of structures in Grand Turk island. This is a preliminary analysis and has not yet been validated in the field. Please send ground feedback to UNITAR-UNOSAT.

Legend

-  Capital
-  Damaged structure
-  Airport
-  Secondary road
-  Local road
-  Administrative boundary



Map Scale for A3: 1:31,000



Analysis conducted with ArcGIS v10.4.1

Coordinate System: WGS 1984 UTM Zone 19N
Projection: Transverse Mercator
Datum: WGS 1984
Units: Meter

Satellite Data (Post): Pleiades
Imagery Date: 23 September 2017
Resolution: 50 cm
Copyright: CNES 2017, Distribution Airbus Defence and Space
Source: Airbus Defence and Space

Satellite Data (Pre): Bing
Copyright: Microsoft Corporation
Source: Microsoft Corporation
Baseline Data: Humanitarian Open Street Maps (13/09/2017)
Analysis: UNITAR - UNOSAT
Production: UNITAR - UNOSAT

The depiction and use of boundaries, geographic names and related data shown here are not warranted to be error-free nor do they imply official endorsement or acceptance by the United Nations. UNOSAT is a program of the United Nations Institute for Training and Research (UNITAR), providing satellite imagery and related geographic information, research and analysis to UN humanitarian & development agencies & their implementing partners. This work by UNITAR-UNOSAT is licensed under a CC BY-NC 3.0.