



***UNOSAT Damage Assessment of
Baal Shamin Temple
Palmyra, Syria***



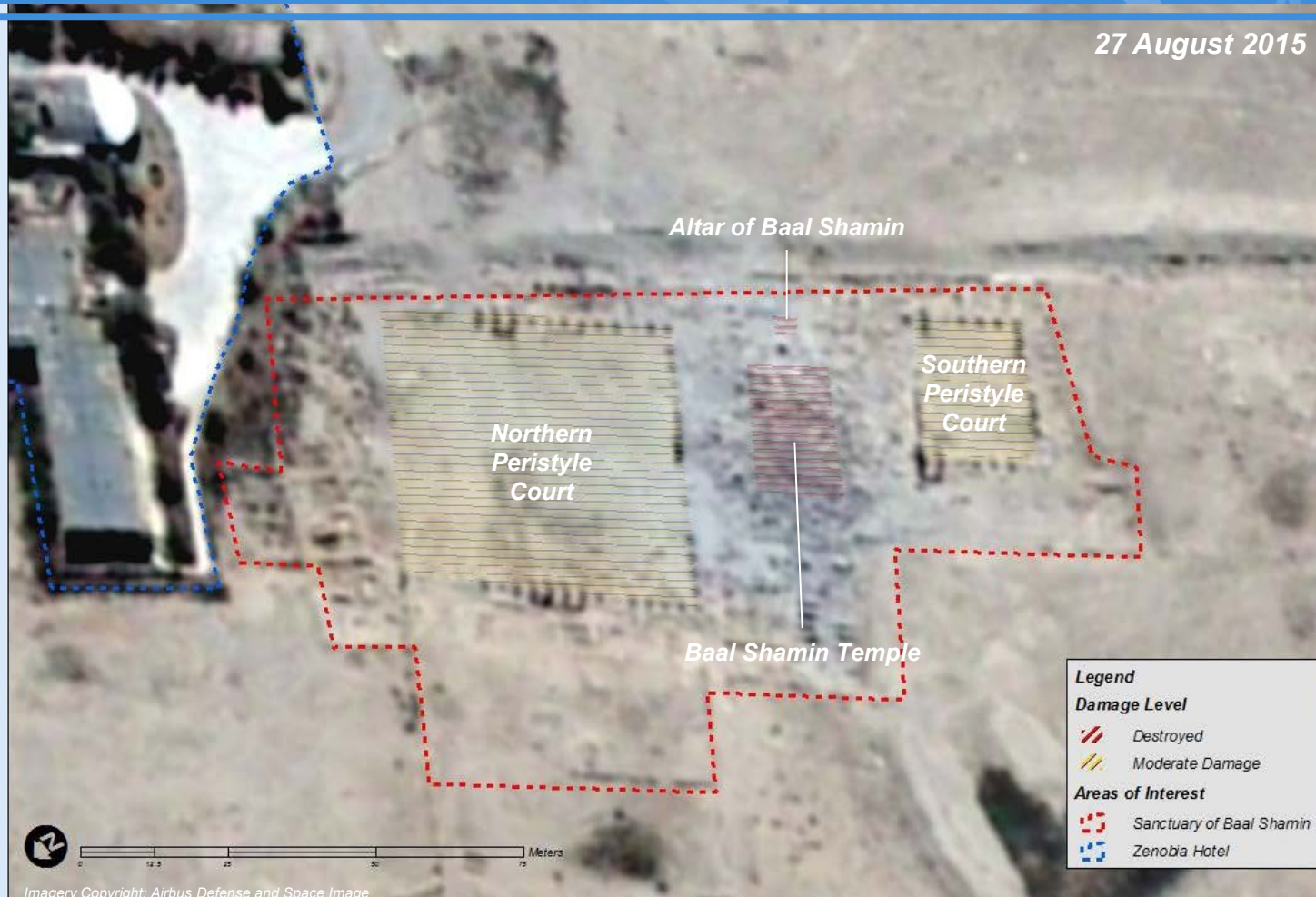
Baal Shamin Temple - Damage Assessment



Imagery acquired on 27 August 2015 (below) shows the Baal Shamin Temple completely destroyed. Using satellite imagery acquired 27 and 25 August 2015 compared with imagery from 26 June 2015, UNITAR-UNOSAT identified the location of the temple and damage extent. The Temple of Baal Shamin was an ancient stone ruin located in Palmyra, Syria.

Baal Shamin Temple - Damage Level Assessment

27 August 2015



UNITAR Operational Satellite Application Programme (UNOSAT)

Contact information:

www.unitar.org/unosat

unosat@unitar.org

T +41 22 767 4020



unitar

United Nations Institute for Training and Research

United Nations Institute for Training and Research

Institut des Nations Unies pour la Formation et la Recherche

Instituto de las Naciones Unidas para Formación Profesional e Investigaciones

Учебный и научно-исследовательский институт

Организации Объединенных Наций

معهد الأمم المتحدة للتدريب والبحث

联合国训练研究所

Palais des Nations

1211 Geneva 10

Switzerland

T +41 22 917 8400

F +41 22 917 8047

www.unitar.org