

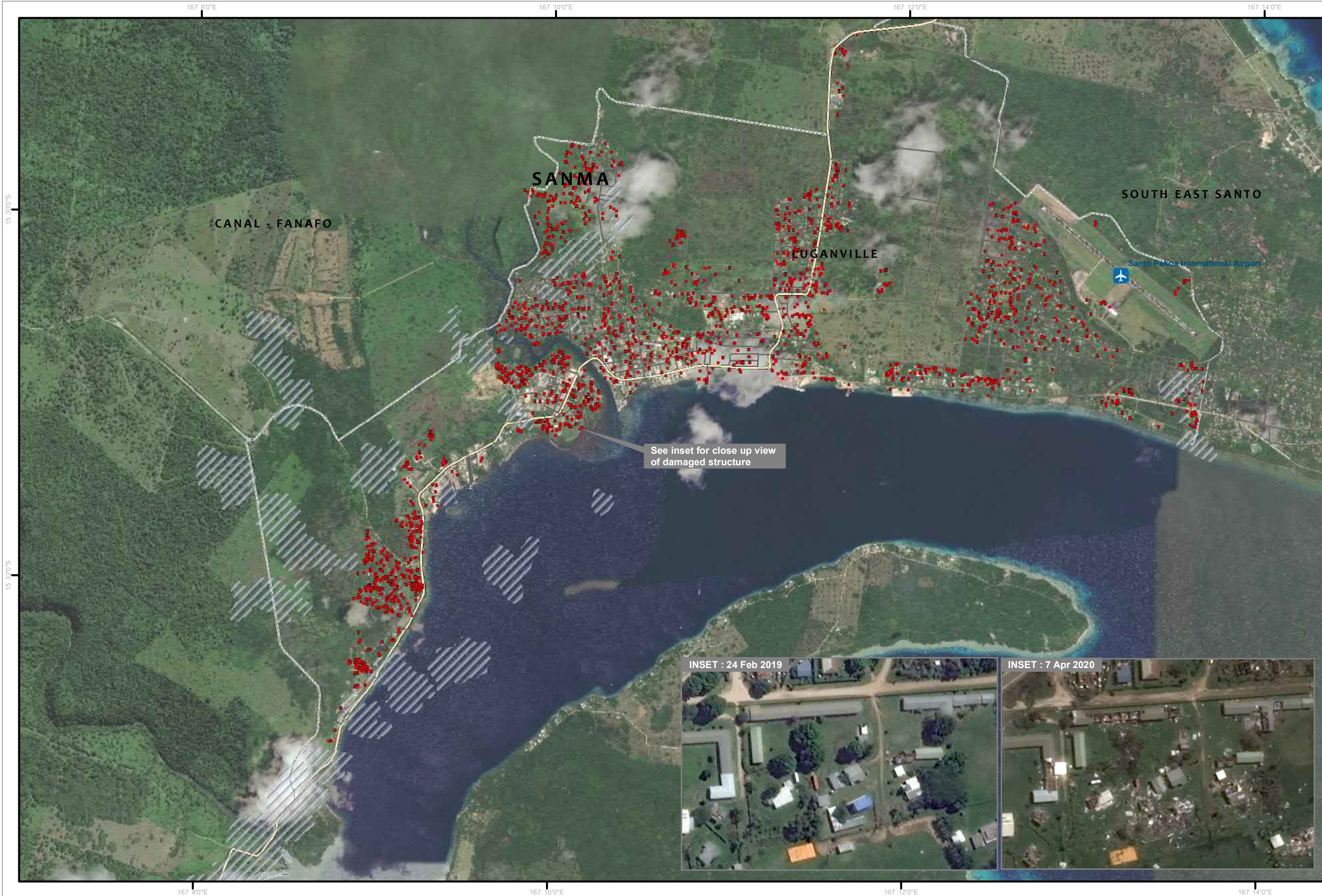
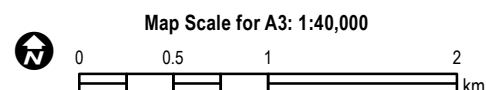
Damage Assessment in Luganville Municipality, Sanma Province, Vanuatu

This map illustrates potentially damaged structures and buildings in Luganville Municipality, Sanma Province, Vanuatu as detected by satellite image acquired after landfall of the Tropical Cyclone Harold-20 on 6 April 2020. UNITAR-UNOSAT analysis used a Pleiades image acquired on 7 April 2020 as post event image. Within the Luganville Municipality boundary, UNITAR-UNOSAT identified in the cloud free zones 1,972 potentially damaged structures. Taking into account the pre-building footprints provided by OpenStreetMap, this represents about 35 % of the total number of structures within the analyzed cloud free areas.

This is a preliminary analysis and has not yet been validated in the field. Please send ground feedback to UNITAR-UNOSAT.

Legend

- Damaged Structure
-  Airport
-  Primary road
-  Local road
-  Municipality boundary
-  Cloud mask



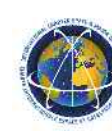
Analysis conducted with ArcGIS v10.7

Coordinate System: WGS 1984 UTM Zone 58S
 Projection: Transverse Mercator
 Datum: WGS 1984
 Units: Meter

Satellite Data (Pre) : WorldView-2
 Imagery Date : 24 February 2019
 Resolution : 50 cm
 Copyright : 2020 Digital Globe
 Source : USGS-HDDS

Satellite Data (Post) : Pleiades
 Imagery Date : 7 April 2020
 Resolution : 50 cm
 Copyright : CNES (2020), distribution Airbus D&S
 Source : Airbus DS

Administrative boundaries: OCHA ROP
 Baseline Data: OSM
 Analysis : UNITAR - UNOSAT
 Production: UNITAR - UNOSAT



The depiction and use of boundaries, geographic names and related data shown here are not warranted to be error-free nor do they imply official endorsement or acceptance by the United Nations. UNOSAT is a program of the United Nations Institute for Training and Research (UNITAR), providing satellite imagery and related geographic information, research and analysis to UN humanitarian & development agencies & their implementing partners. This work by UNITAR-UNOSAT is licensed under a CC BY-NC 3.0.