



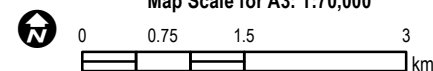
Damage Assessment in Malo Island, Sanma Province, Vanuatu

This map illustrates potentially damaged structures and buildings in West Malo and East Malo Municipality, Sanma Province, Vanuatu as detected by satellite image acquired after landfall of the Tropical Cyclone Harold-20 on 6 April 2020. UNITAR-UNOSAT analysis used a Pleiades image acquired on 7 and 10 April 2020 as post event images, Within the Island extent, UNITAR-UNOSAT identified in the cloud free zones 1,345 potentially damaged structures. Taking into account the pre-building footprints provided by Humanitarian OpenStreetMap, this represents about 45 % of the total number of structures within the analyzed cloud free areas.

This is a preliminary analysis and has not yet been validated in the field. Please send ground feedback to UNITAR-UNOSAT.

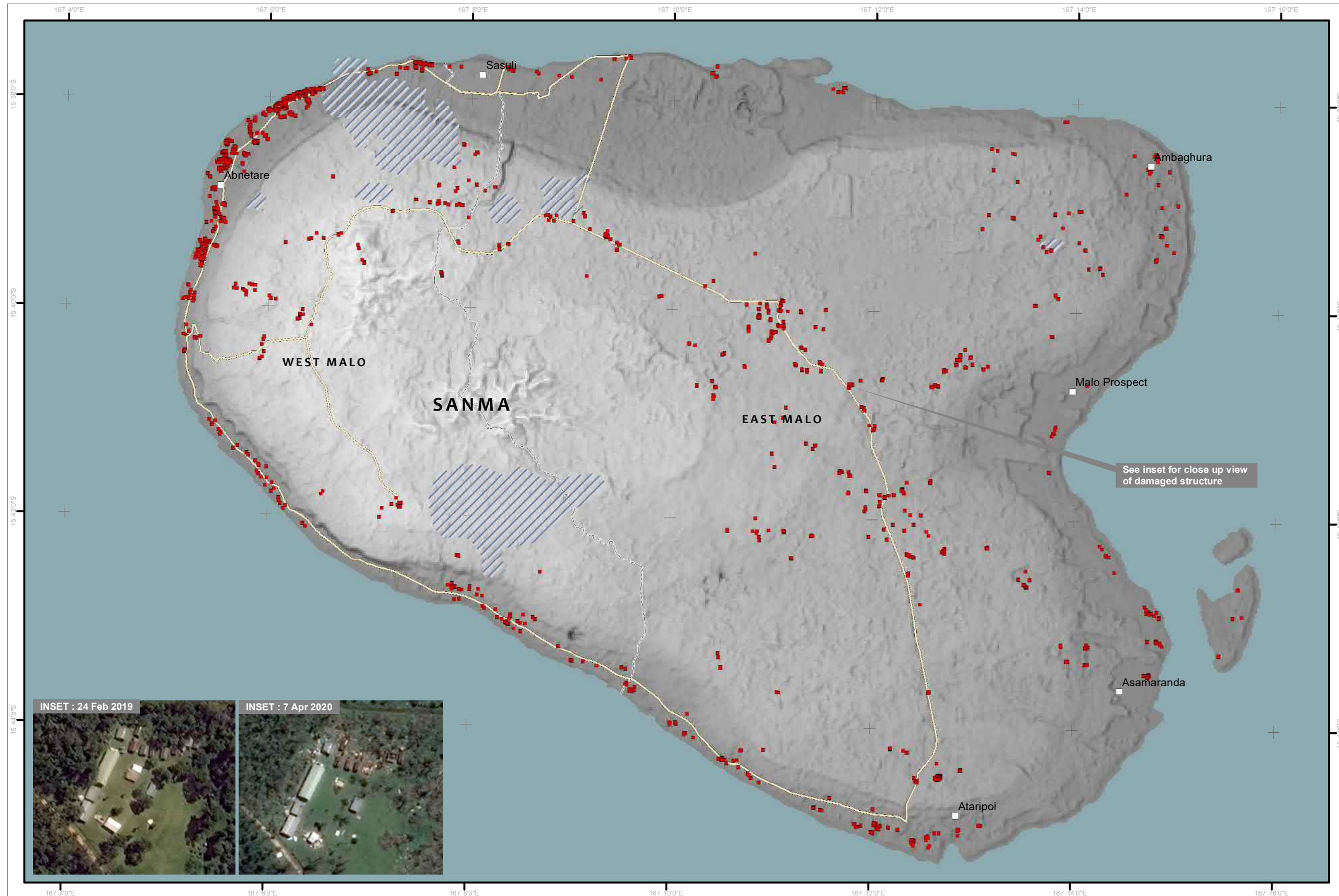
Legend

- Damaged Structure
- City / Town
- Local road
- Municipality boundary
- Cloud mask



Analysis conducted with ArcGIS v10.7

Coordinate System: WGS 1984 UTM Zone 58S
Projection: Transverse Mercator
Datum: WGS 1984
Units: Meter



Satellite Data (Pre) : WorldView-2
Imagery Date : 24 February 2019
Resolution : 50 cm
Copyright : 2020 Digital Globe
Source : USGS-HDDS

Satellite Data (Post) : Pleiades
Imagery Date : 7 and 10 April 2020
Resolution : 50 cm
Copyright : CNES (2020), distribution Airbus D&S
Source : Airbus DS

Administrative boundaries: OCHA ROP
Baseline Data: OSM
Background : ALOS Global Digital Surface Model,
JAXA
Analysis : UNITAR - UNOSAT
Production: UNITAR - UNOSAT



The depiction and use of boundaries, geographic names and related data shown here are not warranted to be error-free nor do they imply official endorsement or acceptance by the United Nations. UNOSAT is a program of the United Nations Institute for Training and Research (UNITAR), providing satellite imagery and related geographic information, research and analysis to UN humanitarian & development agencies & their implementing partners. This work by UNITAR-UNOSAT is licensed under a CC BY-NC 3.0.