



## Damage Assessment in Pointe Michel (Saint Luke Parish)

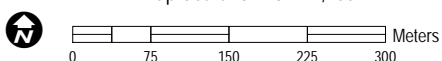
This map illustrates potentially damaged structures and buildings in Pointe Michel (Saint Luke Parish) as detected by satellite image acquired after landfall of the Tropical Cyclone Maria-17 on 19 September 2017. UNITAR-UNOSAT analysis used a Pleiades image acquired on 23 September 2017 as post imagery. UNITAR-UNOSAT identified in the analysed area Pointe Michel (St. Luke Parish) 550 potentially damaged structures. Taking into account the pre-building footprints provided by Humanitarian OpenStreetMap, this represent about 70 % of the total number of structures within the analysed area. Evidences of floods and mudflow could be also observed along the two rivers that cross the town of Pointe Michel. This is a preliminary analysis and has not yet been validated in the field. Please send ground feedback to UNITAR-UNOSAT.

### Legend

- Locality
- Damaged structure
- Primary road
- Local road
- River

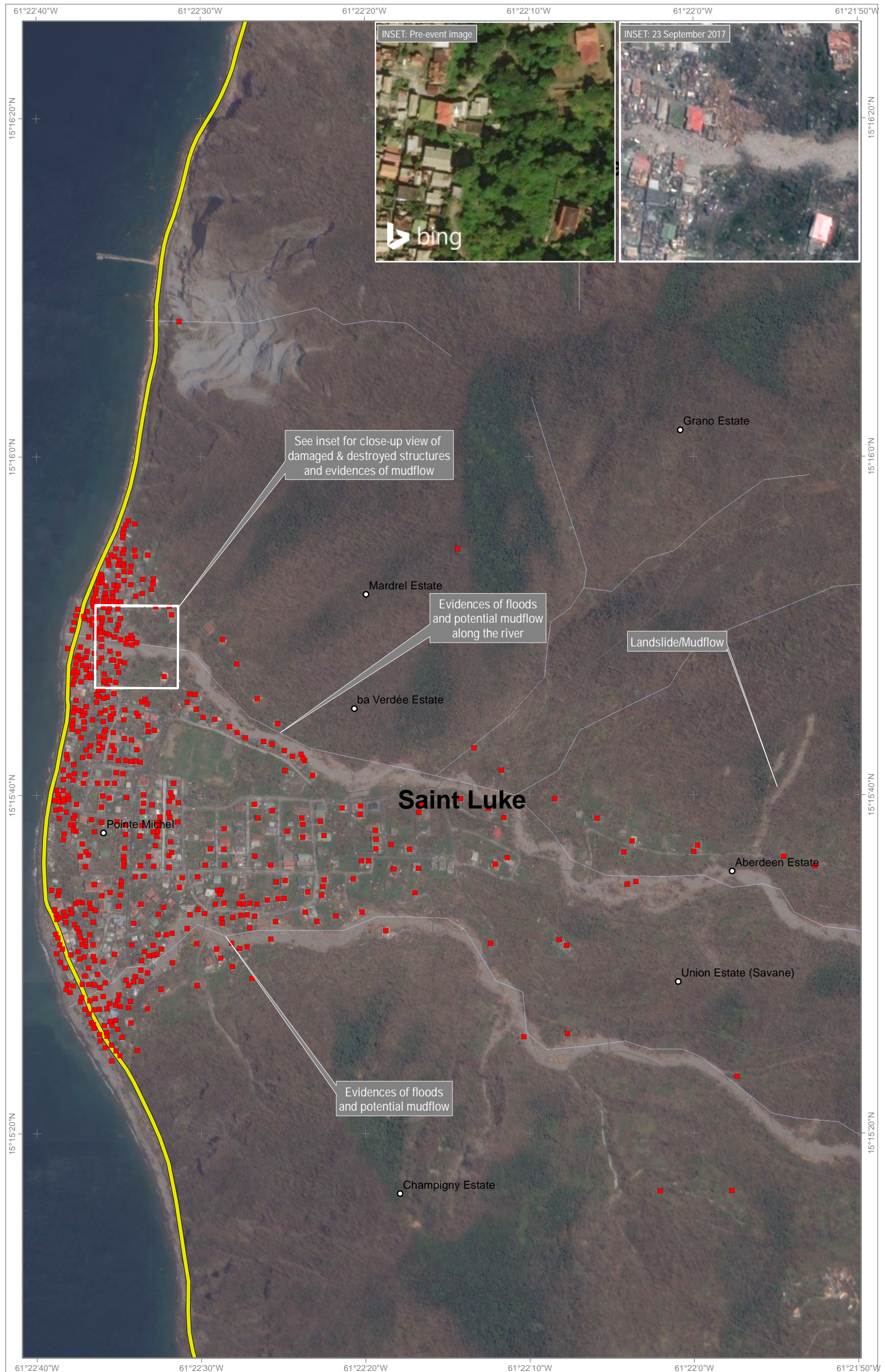


Map Scale for A3: 1:7,250



Analysis conducted with ArcGIS v10.4.1

Coordinate System: WGS 1984 UTM Zone 20N  
Projection: Transverse Mercator  
Datum: WGS 1984  
Units: Meter



Satellite Data (Post): Pleiades  
Imagery Date: 23 September 2017  
Resolution: 50 cm  
Copyright: CNES 2017, Distribution Airbus Defence and Space  
Source: Airbus Defence and Space  
Satellite Data (Pre): Kompsat-3

Imagery Date: 05 May 2015  
Resolution: 70 cm  
Copyright: KARI  
Source: KARI  
Baseline Data: Humanitarian OpenStreet Maps (21/09/2017)  
Analysis/Production: UNITAR - UNOSAT

The depiction and use of boundaries, geographic names and related data shown here are not warranted to be error-free nor do they imply official endorsement or acceptance by the United Nations. UNOSAT is a program of the United Nations Institute for Training and Research (UNITAR), providing satellite imagery and related geographic information, research and analysis to UN humanitarian & development agencies & their implementing partners. This work by UNITAR-UNOSAT is licensed under a CC BY-NC 3.0.