

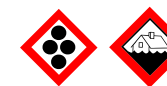
# Situation Overview and Rainfall Estimate for Flood Affected Townships of Maungdaw & Buthidaung, Myanmar

This map presents the Maungdaw and Buthidaung area for local areas, and is not a substitute for ground station measurements. This is a preliminary analysis and has not yet been validated in the field. Rainfall estimate was derived from NASA Tropical Rainfall Measuring Mission (TRMM) data for precipitation over the area on the 10th - 16th of June 2010. It is possible that precipitation levels may have been underestimated.



Disaster coverage by the International Charter 'Space and Major Disasters'. For more information on the Charter, which is about assisting the disaster relief organizations with multi-satellite data and information, visit [www.disasterscharter.org](http://www.disasterscharter.org)

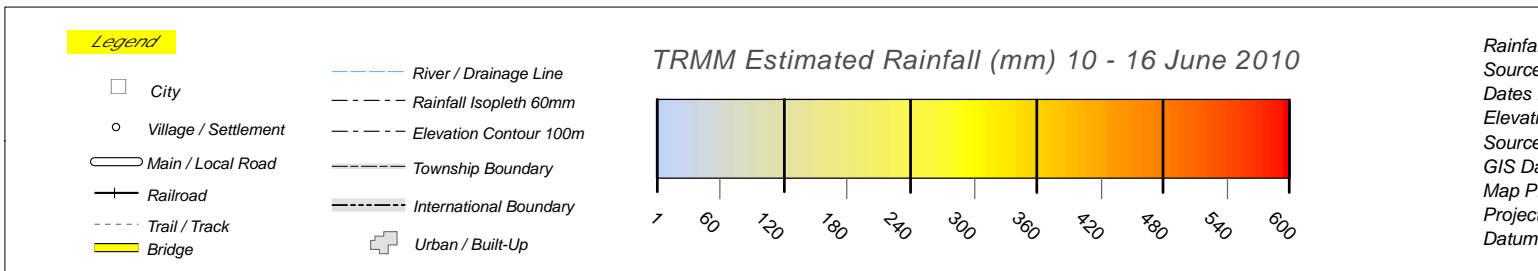
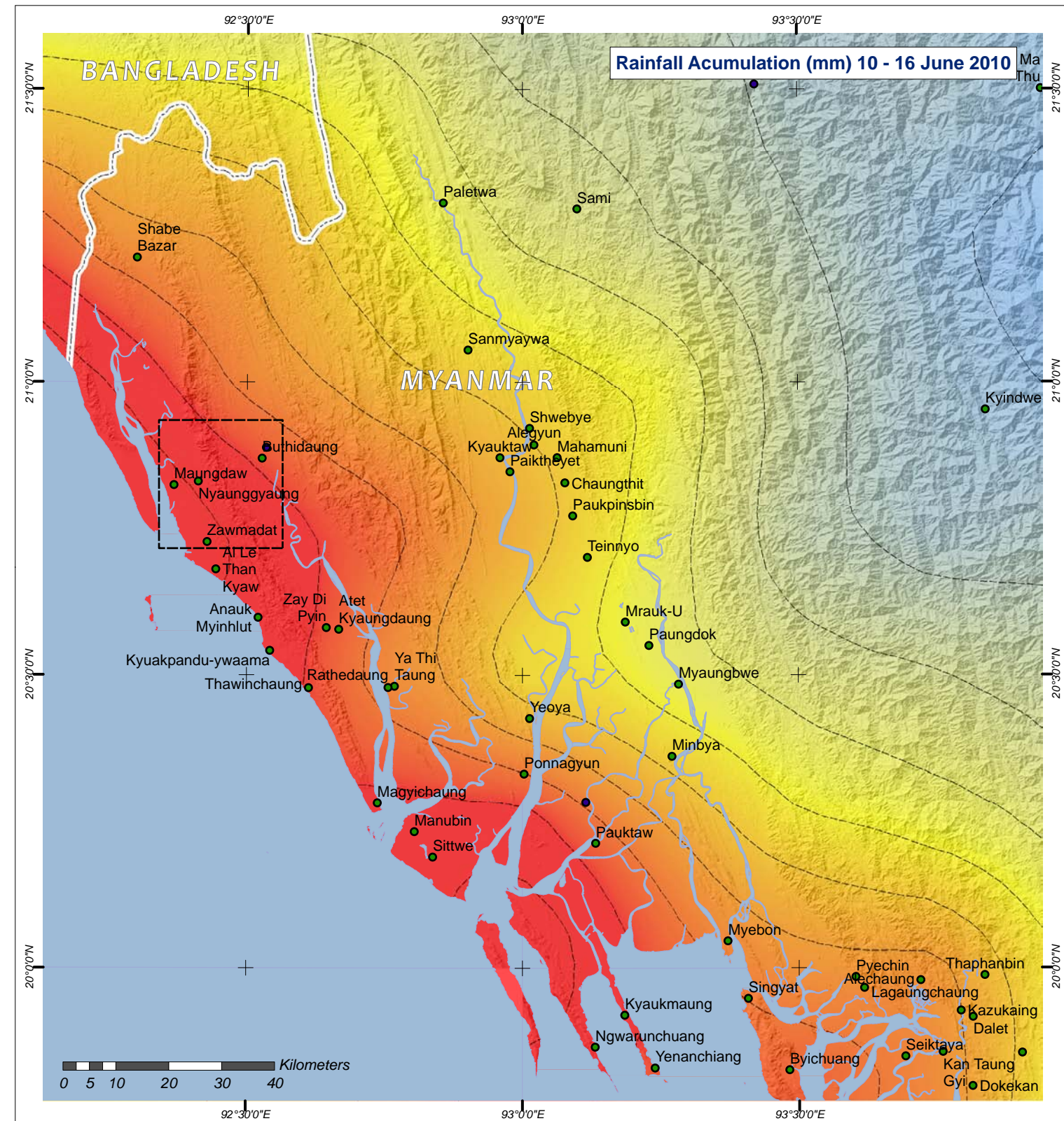
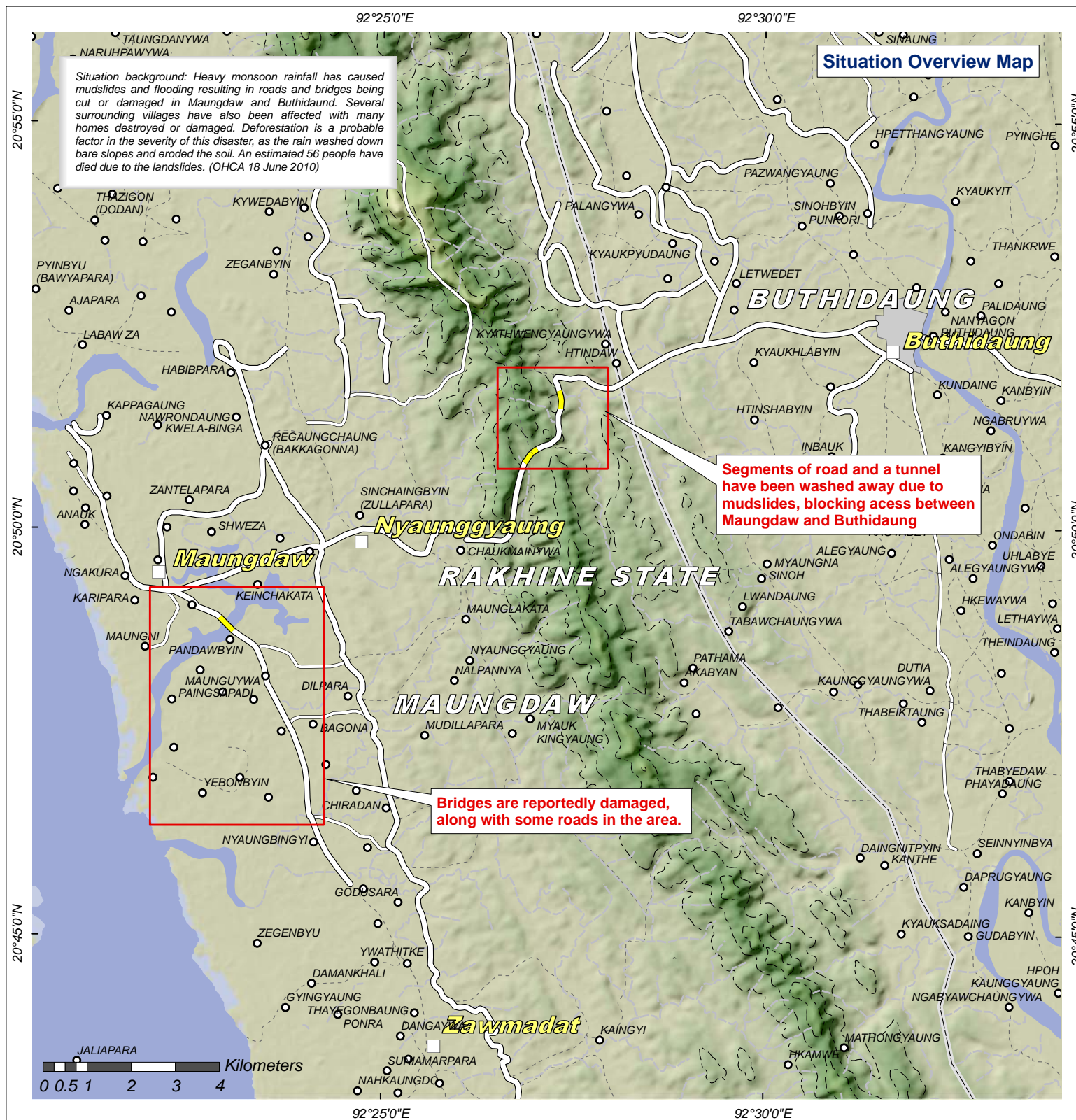
Heavy Rainfall & Flooding



21 June 2010

Version 1.0

Glide No: FL-2010-000115-MMR



Rainfall Data	TRMM
Source	NASA
Dates	10 - 16 June 2010
Elevation Data	Aster GDEM
Source	METI & NASA 2009
GIS Data	NGA (Vmap)
Map Production	UNOSAT
Projection	UTM Zone 46N
Datum	WGS - 84

The depiction and use of boundaries, geographic names and related data shown here are not warranted to be error-free nor do they imply official endorsement or acceptance by the United Nations. UNOSAT is a program of the United Nations Institute for Training and Research (UNITAR), providing satellite imagery and related geographic information, research and analysis to UN humanitarian & development agencies & their implementing partners.

**UNITAR**  
United Nations Institute for Training and Research

**UNOSAT**

Contact Information: [unosat@unitar.org](mailto:unosat@unitar.org)  
24/7 Hotline: +41 76 487 4998  
[www.unosat.org](http://www.unosat.org)