

ESTIMATED AVERAGE RAINFALL ACCUMULATION: NIGERIA

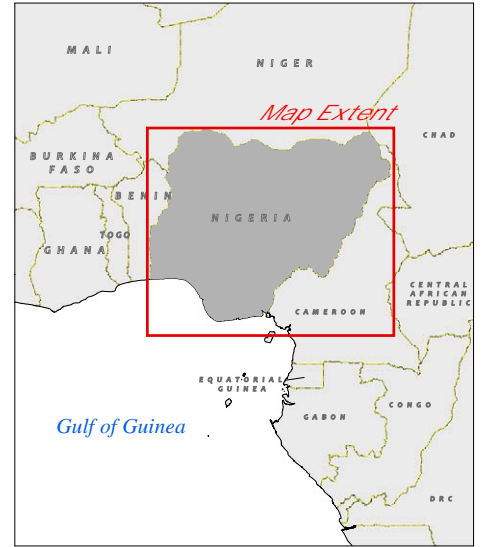
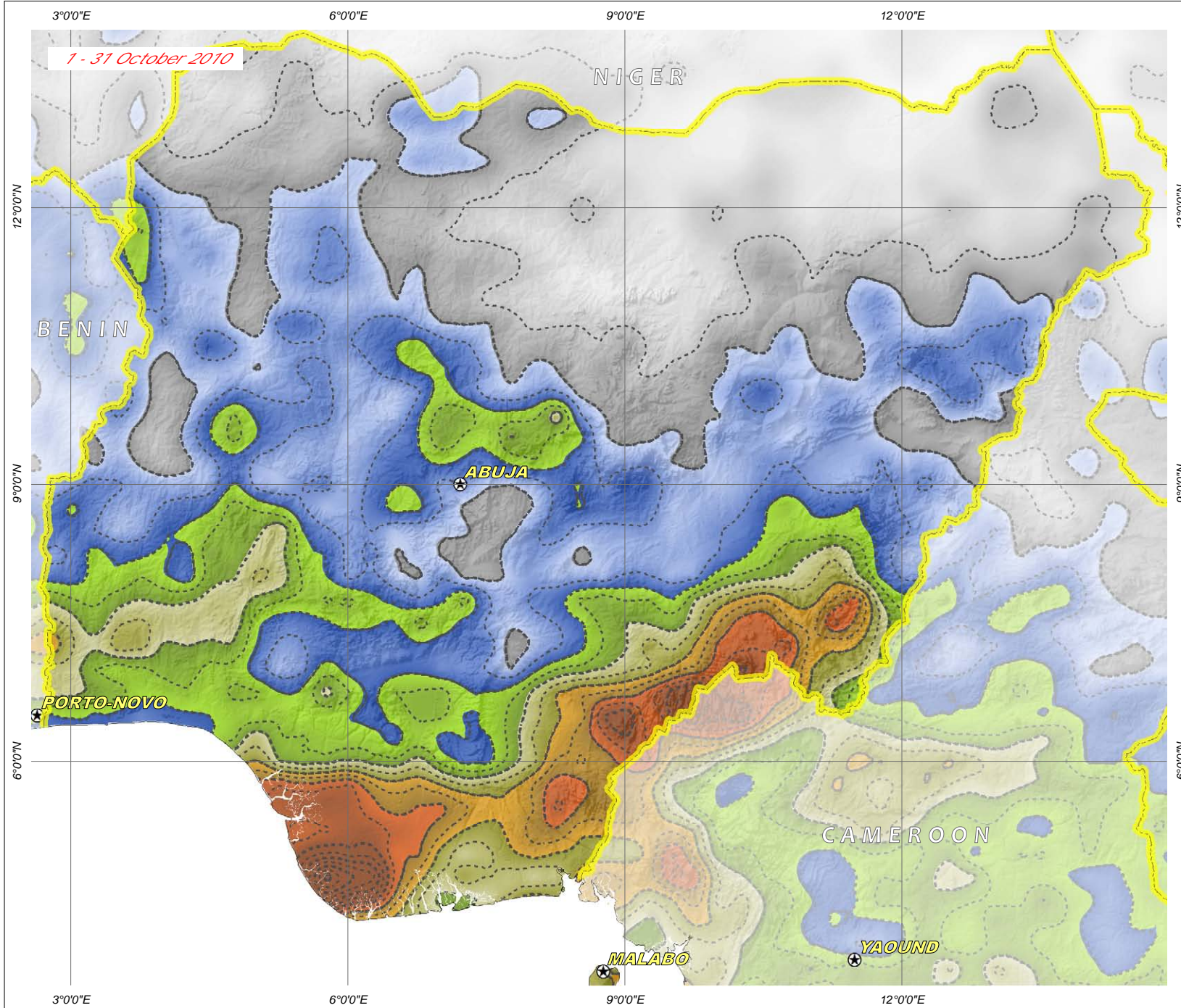
ESTIMATED TOTAL RAINFALL ACCUMULATION FOR THE PERIOD : 25 - 31 & 1 - 31 OCTOBER 2010

Heavy Rainfall & Flooding 5 November 2010



Version 1.0

FL-2010-000000-NGA



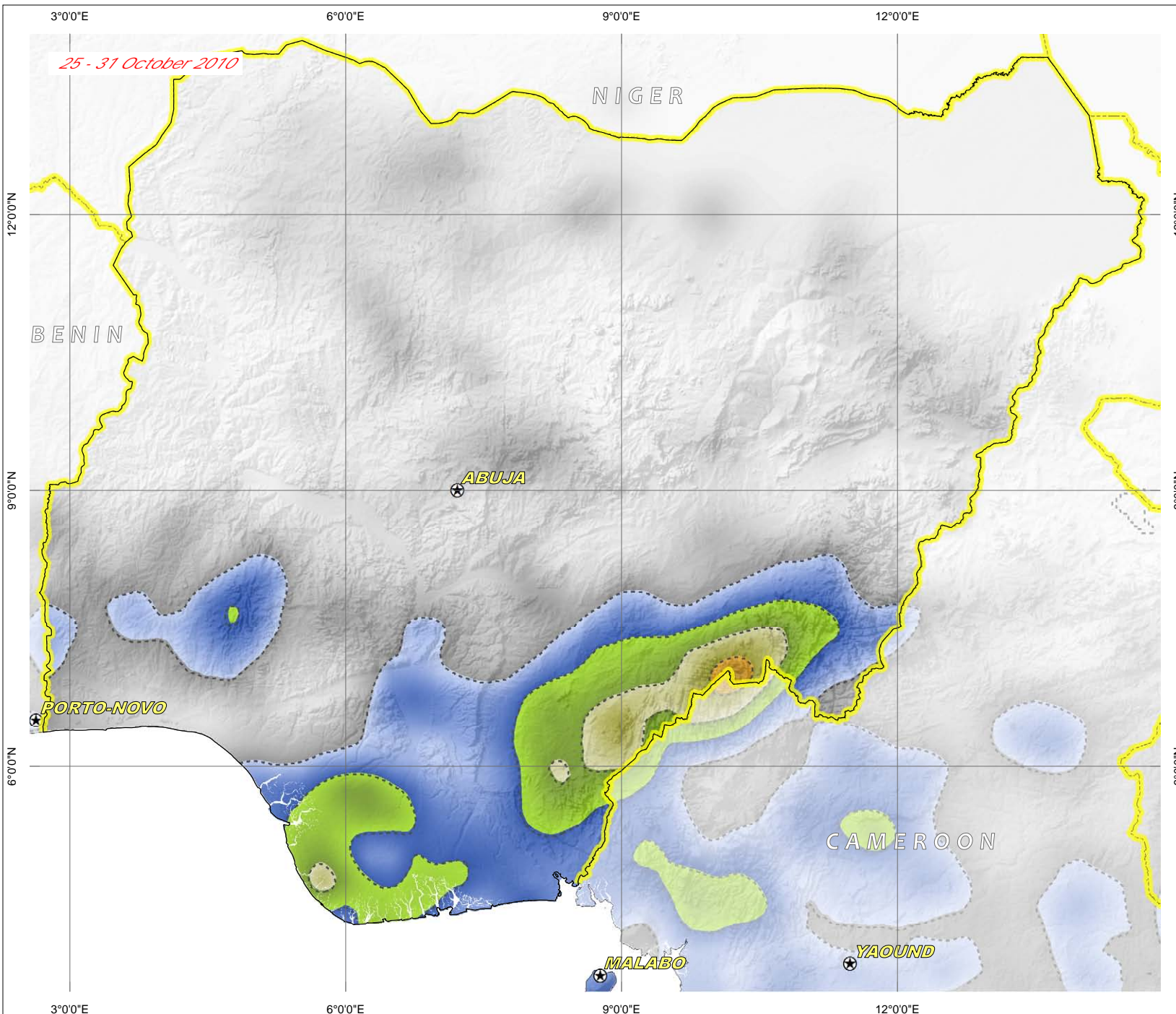
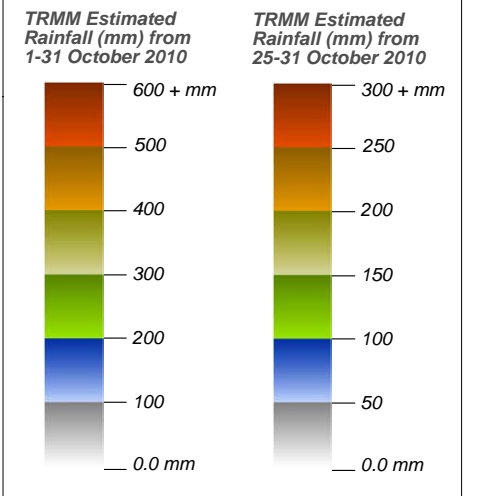
Map Information

This map illustrates estimated total rainfall accumulation for Nigeria. This total estimate was derived from the Tropical Rainfall Monitoring Mission (TRMM) precipitation dataset at a spatial resolution of approximately 25km for this region, and covers the dates from 1 -31 October 2010, with a 1 week overview from 25 -31 October 2010. It is possible that precipitation levels may have been underestimated for local areas, and is not a substitute for ground station measurements. The mean average rainfall totals by district have also been calculated and displayed in the inset map and associated table. This rainfall estimate is a preliminary result & has not yet been validated in the field.

The depiction and use of boundaries, geographic names and related data shown here are not warranted to be error-free nor do they imply official endorsement or acceptance by the United Nations. This map was produced by the United Nations Institute for Training and Research (UNITAR) Operational Satellite Applications Programme (UNOSAT). UNOSAT provides satellite imagery and related geographic information to UN humanitarian and development agencies and their implementing partners.

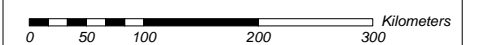
Map Legend

- International Boundary
- Province Boundary
- Rainfall Contour (Isohyet) Lines (50mm)
- Capital



Map Scale for A3: 1:6,600,000

1 centimeter = 66 kilometers



Flood Analysis UNOSAT
 Rainfall Data TRMM (NASA)
 Resolution 0.25 deg
 Date Series 1 - 31 October 2010
 Other GIS Data GIST, USGS, ESRI, GEBCO
 Map Production UNOSAT (5 November 2010)
 Projection UTM, Zone 31 North
 Datum WGS 1984

UNOSAT

Contact Information:
unosat@unitar.org
 24/7 Hotline: +41 76 487 4998
 Web Address: www.unosat.org