



unitar

United Nations Institute for Training and Research

UNOSAT

Monsoon Rains & Flooding

23 August 2010

Version 1 - 16:30UTC

FL-2010-000141-PAK



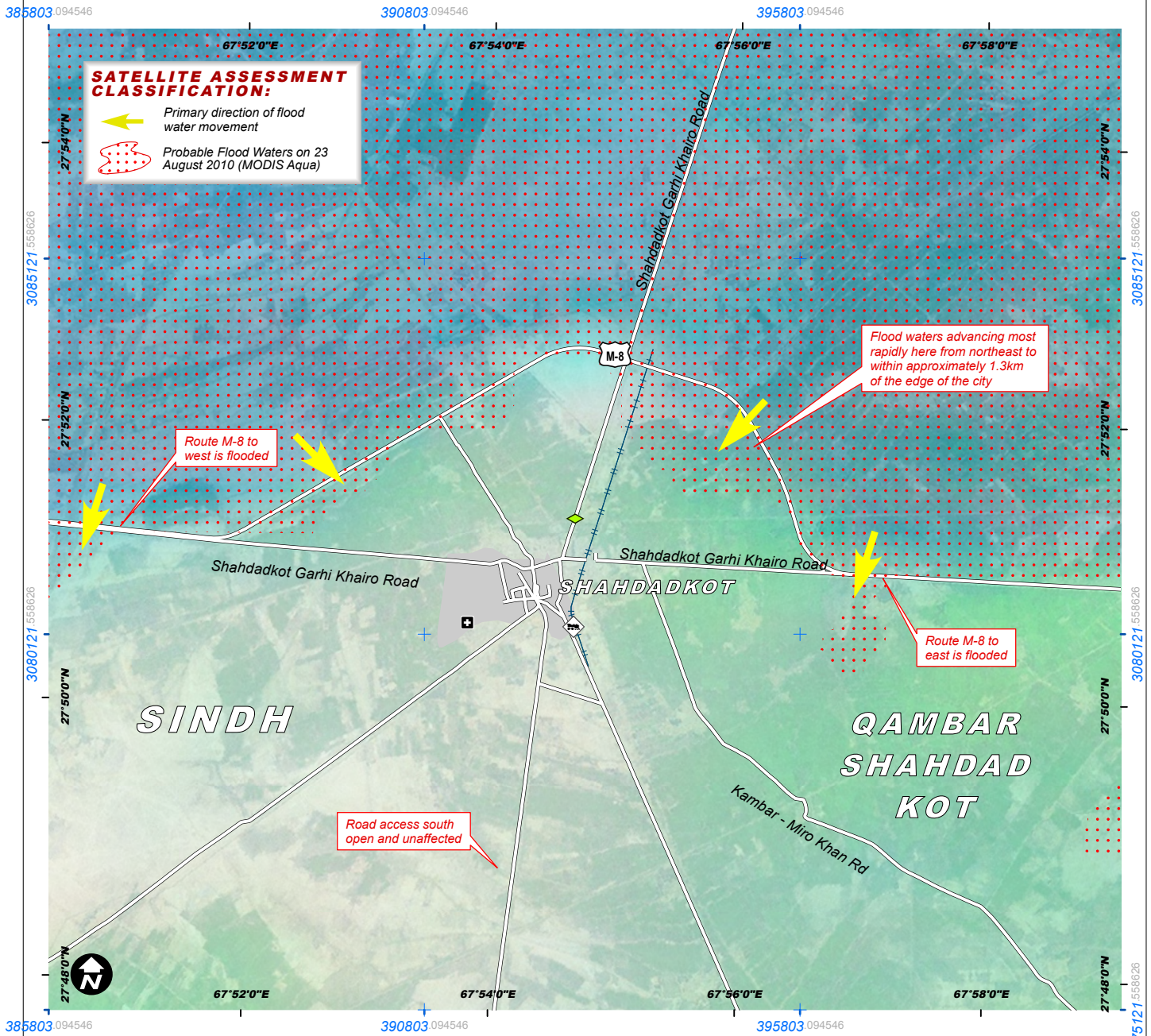
SITUATION UPDATE 1: FLOOD WATERS RISING NORTH OF SHAHDADKOT, SINDH PROVINCE

Flood Update Based on MODIS Satellite Data Recorded 23 August 2010 - 06:35 -08:10 UTC

This map presents a situational update on the rising flood waters immediately north of the city of Shahdadkot (est. population of 300,000), based on MODIS satellite data recorded at 06:35 and 08:10 UTC this morning (23 August 2010). Flood waters have continued to advance to within approximately 1.3km of the edge of the

city, with the largest movement located to the north-east in two separate areas (see map annotation and arrows). Route M-8 has been flooded in multiple locations cutting off road traffic both to the east and west. Road access to the south remains open and unaffected by flooding. This situational analysis is based on a

rapid visual assessment of the current satellite data available over this area and will be revised and updated as new data becomes available; this analysis has not yet been validated in the field. Please send ground feedback to UNITAR / UNOSAT.



- Health Facility
- Airport / Airfield
- Barrage
- Bridge
- Primary Road
- Secondary Road
- Railroad
- Train station

Disaster coverage by the International Charter 'Space and Major Disasters'. For more information on the Charter, which is about assisting the disaster relief organizations with multi-satellite data and information, visit www.disasterscharter.org



Crisis Satellite Data (1) MODIS Aqua & Terra
 Resolution 250 meters
 Image Date 23 August 2010
 Source NASA Rapid Response GIS Data NGA, OCHA, USGS, OSM
 Transport Data Google Map Maker
 Transport Data Copyright..... © 2009 Google - Improve with Google Map Maker
 Reference Imagery ESRI WMS 2010
 Hospital Data WHO
 Background Imagery Landsat-7 / MODIS fusion
 Flood Analysis UNITAR / UNOSAT
 Projection UTM Zone 42N
 Datum WGS-84

UNOSAT / UNITAR
 Palais des Nations,
 Geneva, Switzerland
 T: +41 22 767 4020 (UNOSAT Operations)
 24/7 hotline: +41 76 487 4998
 E-mail: emergencymapping@unosat.org
www.unosat.org

The depiction and use of boundaries, geographic names and related data shown here are not warranted to be error-free nor do they imply official endorsement or acceptance by the United Nations. UNOSAT is a program of the United Nations Institute for Training and Research (UNITAR), providing satellite imagery and related geographic information, research and analysis to UN humanitarian & development agencies & their implementing partners.