



**unitar**  
United Nations Institute for Training and Research

**UNOSAT**

Monsoon Rains & Flooding

27 August 2010

Version 3 - 11:30UTC

FL-2010-000141-PAK



# SITUATION UPDATE 3: FLOOD WATERS RAPIDLY ENCIRCLING SHAHDADKOT, SINDH PROVINCE

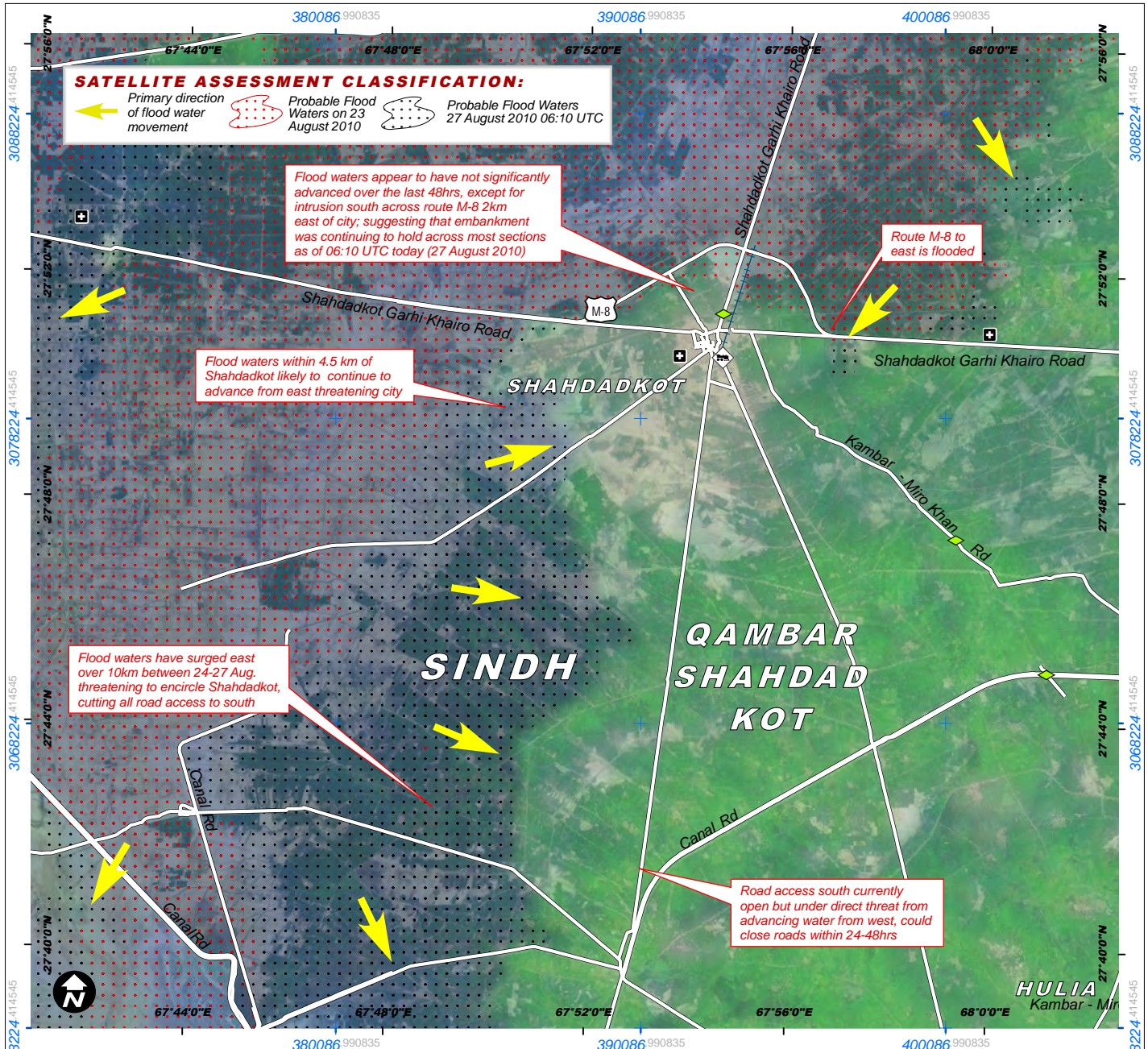
Flood Update Based on MODIS Satellite Data Recorded 27 August 2010 - 06:10 UTC



This is the third situational update on the status of flood waters advancing on the city of Shahdadkot, based on satellite data recorded today at 06:10 UTC (27 August 2010). A change detection analysis has been made comparing satellite imagery from this morning with imagery recorded daily since 23 August 2010. Immediately north of Shahdadkot, the reported makeshift embankment appears to be holding

across most sections as of 06:10 UTC today (27 August 2010) however there is now a direct threat to Shahdadkot from advancing flood waters from the east, now within 4.5 km of the city; To the south-east of Shahdadkot, flood waters have surged east over 10km between 24-27 Aug, threatening to encircle Shahdadkot; Road access south from the city is currently open but under direct threat from the advancing

water from the west, which could close almost all road access to Shahdadkot within 24-48hrs. This situational analysis is based on a rapid visual assessment of the current satellite data available over this area and will be revised and updated as new data becomes available; this analysis has not yet been validated in the field. Please send ground feedback to UNITAR / UNOSAT.



- Health Facility
- Airport / Airfield
- Barrage
- Bridge
- Primary Road
- Secondary Road
- Railroad
- Train station

Disaster coverage by the International Charter 'Space and Major Disasters'. For more information on the Charter, which is about assisting the disaster relief organizations with multi-satellite data and information, visit [www.dfsasterscharter.org](http://www.dfsasterscharter.org)

Map Scale for A4: 1:200,000

0 1 2 4 6 8 10 12 14 Kilometers



Crisis Satellite Data (1) ..... MODIS Aqua & Terra Resolution ..... 250 meters  
 Image Date ..... 23-27 August 2010  
 Source ..... NASA Rapid Response GIS Data ..... NGA, OCHA, USGS, OSM  
 Transport Data Copyright ..... © 2009 Google - Improve with Google Map Maker  
 Reference Imagery ..... ESRI WMS 2010  
 Hospital Data ..... WHO  
 Background Imagery ..... Landsat 7 / MODIS fusion  
 Flood Analysis ..... UNITAR / UNOSAT  
 Projection ..... UTM Zone 42N  
 Datum ..... WGS-84

UNOSAT / UNITAR  
Palais des Nations,  
Geneva, Switzerland  
T: +41 22 767 4020 (UNOSAT Operations)  
24/7 hotline: +41 76 487 4998  
E-mail: [emergencymapping@unosat.org](mailto:emergencymapping@unosat.org)  
[www.unosat.org](http://www.unosat.org)

The depiction and use of boundaries, geographic names and related data shown here are not warranted to be error-free nor do they imply official endorsement or acceptance by the United Nations. UNOSAT is a program of the United Nations Institute for Training and Research (UNITAR), providing satellite imagery and related geographic information, research and analysis to UN humanitarian & development agencies & their implementing partners.