

# DAMAGE ASSESSMENT IN ATATRA, GAZA STRIP - OCCUPIED PALESTINIAN TERRITORY

Analysis with Pleiades Data Acquired 6 July and 25 July 2014

Complex  
Emergency

Production Date:  
04/08/2014

Version 1.0

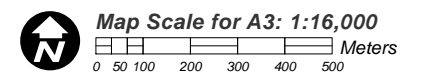
Glide Number:  
CE20140715PSE



This map illustrates satellite-detected damage and destruction in the Atatra area, Gaza Strip, resulting from ongoing violence in the area. Using a satellite image collected 25 July 2014 by the Pleiades satellite, and compared with a pre-crisis Pleiades image collected 6 July 2014, UNOSAT analysis has identified 192 destroyed structures, 60 severely damaged structures, and 89 moderately damaged structures. In addition, 108 craters on roads and in agricultural and non-urbanized areas are also visible as of 25 July 2014. This is a preliminary analysis and has not yet been validated in the field. Please send ground feedback to UNITAR/UNOSAT.

### LEGEND

- Destroyed Structure
- Severely Damaged Structure
- Moderately Damaged Structure
- Crater / Impact
- Hospital
- Mosque
- School
- Road
- UNOSAT Analysis Extent



Satellite Data (1): Pleiades  
Imagery Dates: 25 July 2014  
Resolution: 50 cm  
Copyright: CNES 2014, Distribution Airbus Defence and Space  
Source: Airbus Defence and Space  
Satellite Data (2): Pleiades  
Imagery Date: 06 July 2014  
Resolution: 50 cm  
Copyright: CNES 2014, Distribution Airbus Defence and Space  
Source: Airbus Defence and Space  
Road Data: OSM, ESRI  
Other Data: USGS, UNCS, NGA  
Analysis: UNITAR / UNOSAT  
Production: UNITAR / UNOSAT  
Analysis conducted with ArcGIS v10.2

Coordinate System: WGS 1984 UTM Zone 36N  
Projection: Transverse Mercator  
Datum: WGS 1984  
Units: Meter

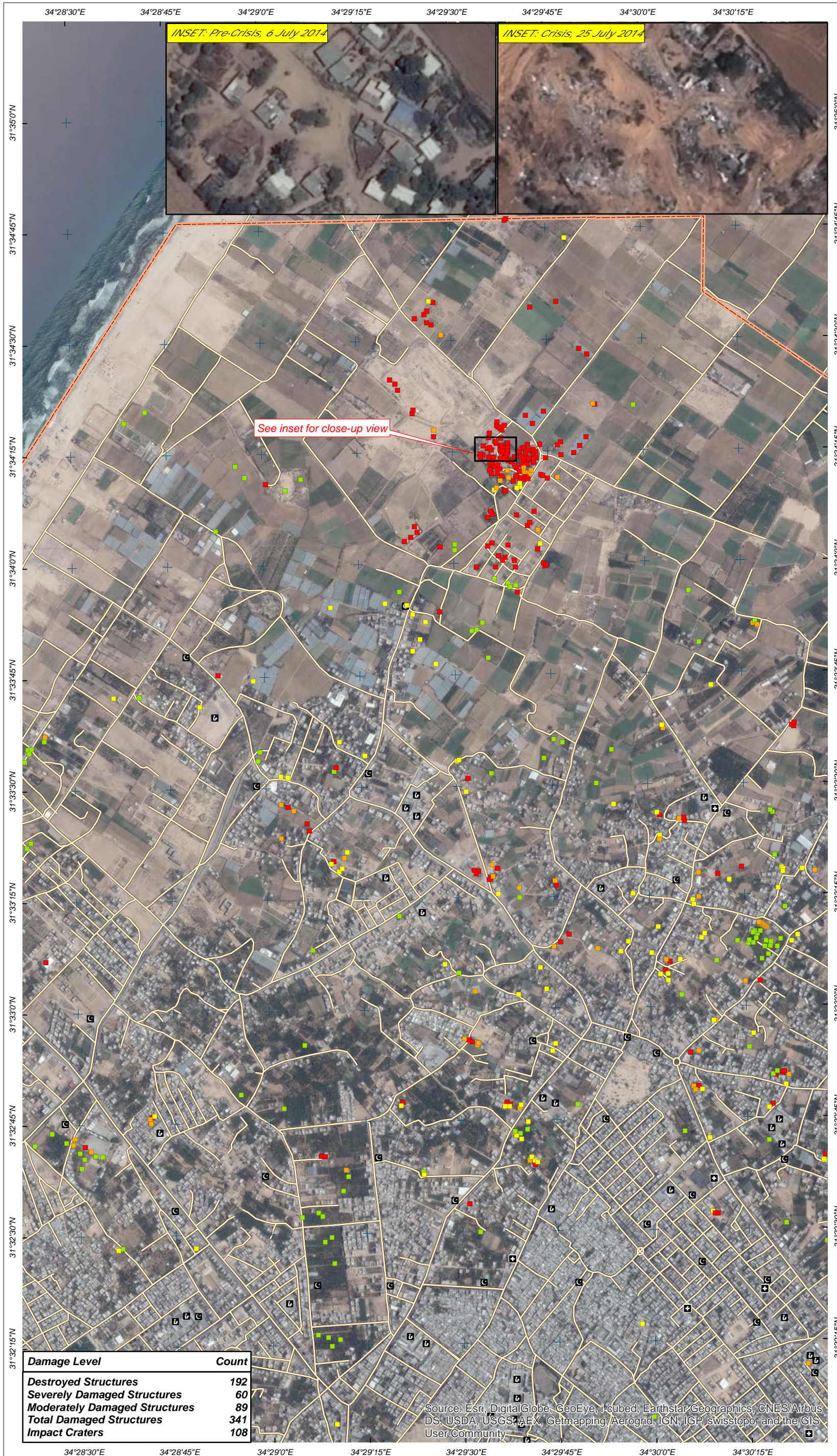
The depiction and use of boundaries, geographic names and related data shown here are not warranted to be error-free nor do they imply official endorsement or acceptance by the United Nations. UNOSAT is a program of the United Nations Institute for Training and Research (UNITAR), providing satellite imagery and related geographic information, research and analysis to UN humanitarian and development agencies and their implementing partners.

This work by UNITAR/UNOSAT is licensed under a Creative Commons Attribution-NonCommercial-ShareAlike 3.0 Unported License.



# UNOSAT

Contact Information: [unosat@unitar.org](mailto:unosat@unitar.org)  
24/7 Hotline: +41 76 487 4998  
[www.unitar.org/unosat](http://www.unitar.org/unosat)



Damage Level	Count
Destroyed Structures	192
Severely Damaged Structures	60
Moderately Damaged Structures	89
Total Damaged Structures	341
Impact Craters	108

Source: Esri, DigitalGlobe, GeoEye, i-cubed, Earthstar Geographics, CNES/Airbus DS, USDA, USGS, AEX, Getmapping, Aerogrid, IGN, IGP, swisstopo, and the GIS User Community